

Evolution of the First Sentient Life on Earth

Humans are not the first intelligence to live on “our” planet earth. There have been many others. Sentience is a complex subject, don’t you know.

Some still exist and we share the earth with them. Some have passed on, either evolving into something different or dying off. Some use and create tools, others just exist within a reality that we, as humans, cannot comprehend. For to us, they seem like nothing other than ambulatory vegetables.

Let’s take a moment to discuss, what I believe to be, the very first intelligent naturally evolved life on the earth; the Cephalopods.

What is Intelligence?

Before we dive into a discussion about Cephalopods, let’s make one thing perfectly clear. Whether a given species is intelligent or not is an *arbitrary* construct. There is no sharp and clear demarcation line that is evidence for intelligence or the lack of it.

My contention that Cephalopods are intelligent with defined sentience is debatable. Indeed, but the argument for and against it is for others to debate off-line at another time and in another place.

Introduction

Cephalopods evolved during the Cambrian period when the moon went in orbit around the earth. They thrived, and became dominant during the Ordovician period, represented by primitive nautiloids. They evolved over the centuries. Today, they are represented by two subclasses;

- Coleoidea, which includes octopuses, squid, and cuttlefish.
- Nautiloidea, represented by Nautilus and Allonautilus.

The Coleoidea has no shell. The Nautiloidea has an external shell.

It is difficult to define when intelligence first sparked within this species. What we can say is that over a long swath of time, various elements of intelligence began to manifest. My guess is that it began to form in the more populous taxa of the Ammonoidea (ammonites) and Belemnoidea (belemnites).



Ammonoids are an extinct group of marine mollusc animals in the subclass Ammonoidea of the class Cephalopoda. These molluscs are more closely related to living coleoids (i.e., octopuses, squid, and cuttlefish) than they are to shelled nautiloids such as the living Nautilus species.

The Cambrian Age

"The Ediacaran and Cambrian periods witnessed a phase of morphological innovation in animal evolution unrivaled in metazoan history, yet the proximate causes of this body plan revolution remain decidedly murky.

The grand puzzle of the Cambrian explosion surely must rank as one of the most important outstanding mysteries in evolutionary biology.

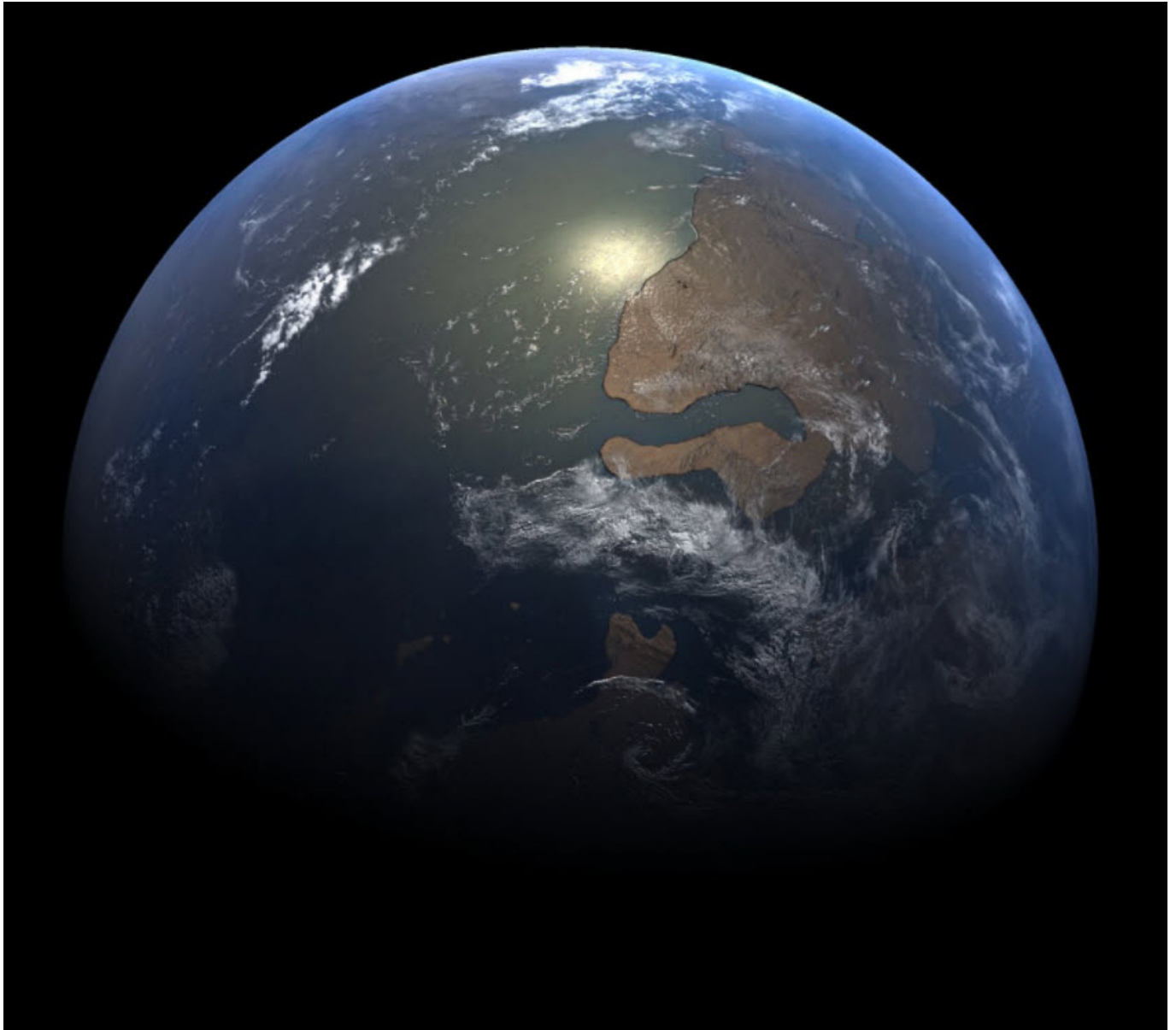
Evidence of early representatives of all the major animal phyla first appear abruptly in the Cambrian (starting 542 million years ago).

This spectacular morphological diversity contrasts strongly with Precambrian deposits, which have yielded a sparse fossil record with small, morphologically ambiguous trace fossils or the enigmatic but elegant creatures of the Ediacaran fauna. Following the Cambrian, despite a rich fossil record that documents impressive morphological diversification among animals, no new body plans have been revealed, leaving the Cambrian as the apparent crucible of metazoan body plan innovation."

-Creation / Evolution Headlines

The Cambrian period is a very long time ago. In fact, it is around 541–485.4 million years ago. (Let's simply refer to the date as 540 million years ago.) At that time, the earth was mostly ocean. The continents were, as we can best tell, centered around the south pole. Leaving a comfortable bulk of the world covered by ocean.

The earth was, at that time, a ocean world with some notable mini-continents.

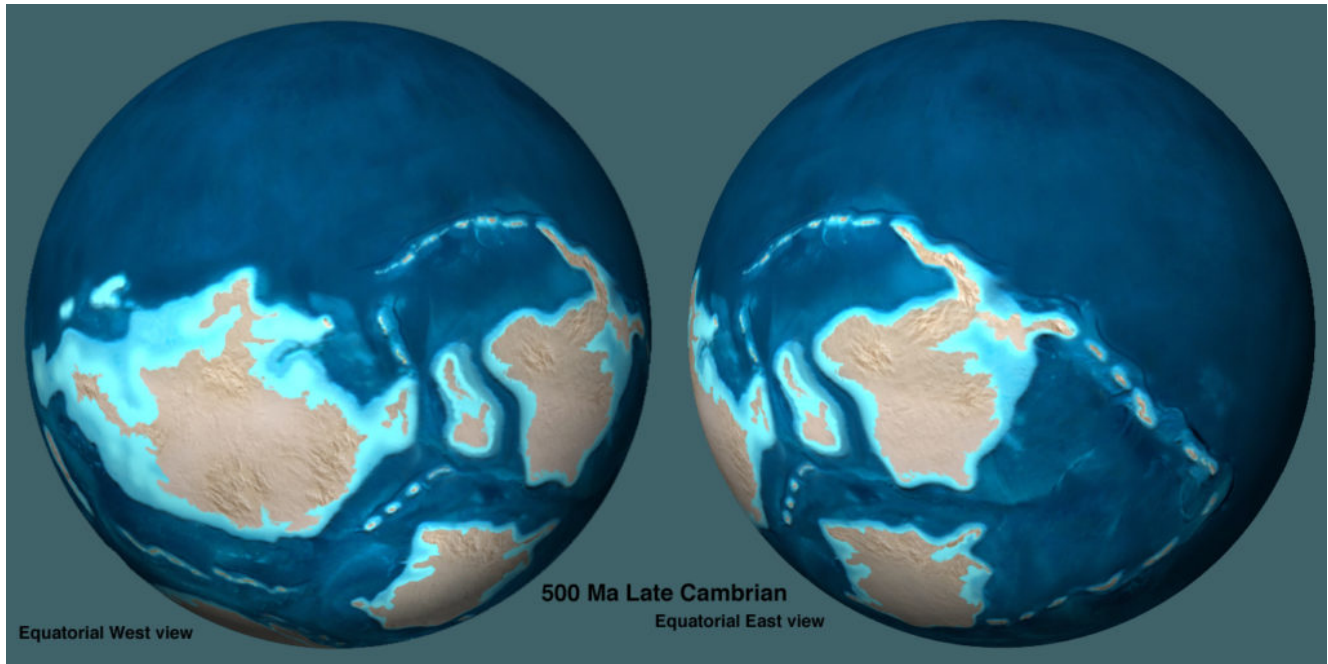


The earth at the time of the Cambrian was of a mostly ocean covered world. The major land mass was centered at the South pole.

It was a warm time.

The overall world weather was rather warm. The equator was pretty darn hot, and the poles were both comfortable in temperature. There wasn't any glaciation.

The various landmasses present at that time were scattered about. (This all was a result of the fragmentation of the super-continent Rodinia that had existed in the late Proterozoic.) There were a number of (more or less) significant landmasses. Though, most of the of the continents were joined together to form the super-continent Gondwana



A map of the Cambrian at around 500 Ma. The world was mostly an ocean covered world with mild climates, calm seas, no glaciers or ice covered poles. The land masses were mostly devoid of life. The oceans, however, were teeming with life. (Image [Source](#).)

Prior to the Cambrian, the earth was not at all like we would assume it to be. It consisted of a very lively aquatic biosphere, and a terribly barren terrestrial land biosphere. The land masses were all barren and devoid of most life.

The earth was quite different. The land was typically barren, and rocky. The oceans were filled with all sorts of aquatic creatures.

There were no animals. There were no insects. There were no flowers. There were no trees, nor grasses. There might have been a moss or two about, but that was about it. The differences between the two biospheres were too extreme. Nothing in the aquatic biosphere could breach the shore and make it's way onto land. It was a white and black world with no shades of grey anywhere (figuratively speaking).

Then suddenly something happened...

The Cambrian Explosion

This period of time; the Cambrian Period, was a very important point in the history of life on Earth. It was notable in that it was the time when land animals first began to appear. This event is sometimes called the “Cambrian Explosion,” because of the relatively short time that the animals began to appear. It was like “an explosion”.

It was around a half a billion years ago. (I would say that 540 million years is pretty close to half a billion years.) Now, this is a very, very long time ago.

Prior to this time, the bulk of life was from the seas and oceans. There, the life grew and flourished. However it took some time for the life to leave the shores. At that time the oceans were teeming with life. There were jellyfish, marine creatures of all shapes and sizes and fishes. Yet the land was barren except for some life near the coasts.

Then SUDDENLY, out of the blue, life began to appear. It wasn't that it started to appear from zero to full and dense populations. No. Instead, when we refer to life appearing; we actually are referring to “life appearing on land”.



Prior to the moon's appearance, the earth was sharply divided into two sections. One was a lively ocean world filled with all sorts of aquatic creatures. The other was a barren rocky desert devoid of life.

You see, up until the Cambrian period, the earth consisted of two completely separate biospheres. There was the [1] aquatic biosphere, and there was [2] the land biosphere. They were independent and distinct. Fish did not walk on the land, no shellfish climbed up on the hot rocks near the water. No life was on the land.

The [1] aquatic biosphere was relatively easy to start early life within. It was a crucible. We know, now today, that when you have water and heat, you can generally generate microorganisms. Over time they can increase in number and diversify.

The [2] land biosphere was something different. There just wasn't any kind of crucible or nursery for the growth or evolution of land life. The only way that this could occur was through transport from the [1] aquatic biosphere. That could not happen.

There was no *mechanism* to ignite life on the barren soil of the [2] land biosphere.

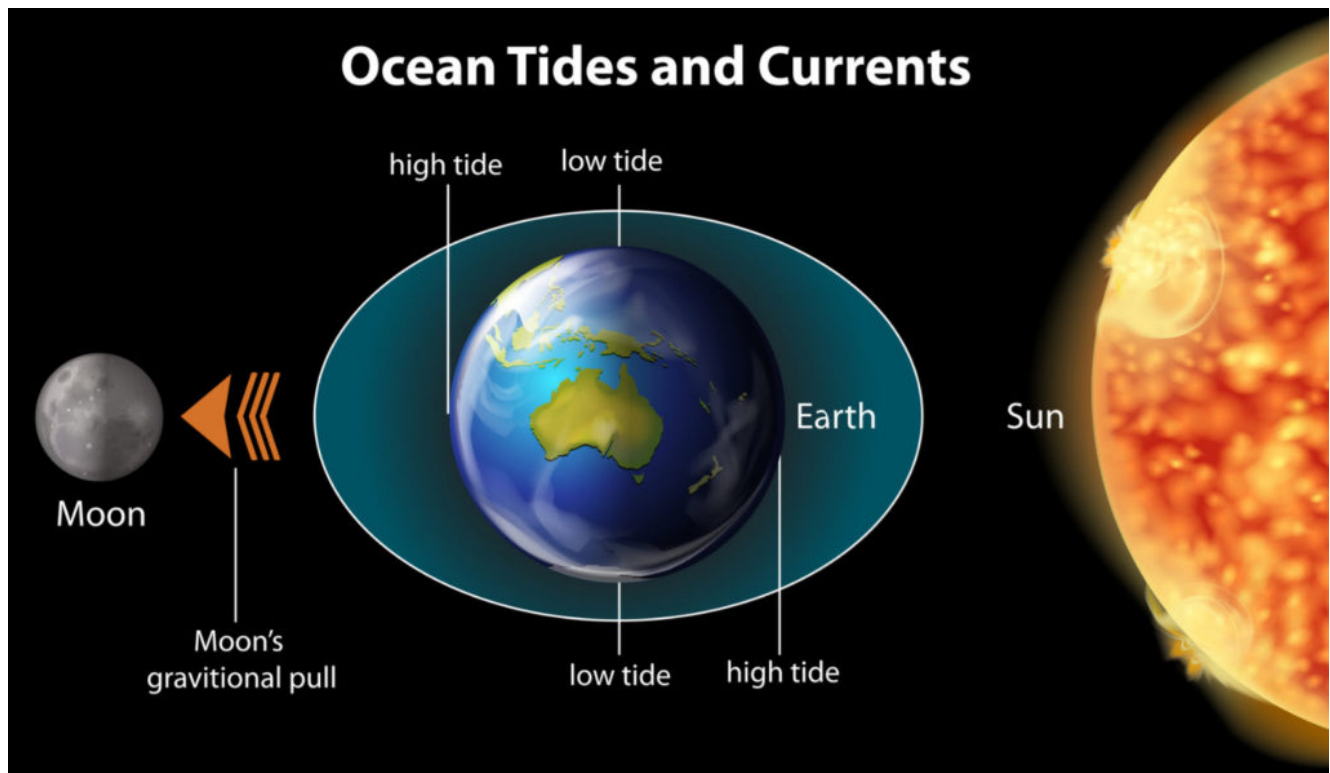
A Need for Tides

The time *immediately before* the Cambrian period is suggestive of a period when there just wasn't any moon present. The earth sat alone without any large orbiting bodies. As a result, there were no tides and no waves. The ocean was a large still body. The only movement on the water was through the sea and ocean currents and the climate at the time.

Tides are created when a large planetary body is near another planetary body. This can be like the moon orbiting the earth, or more commonly, *like a planet in close orbit around a brown / red dwarf or class K star.*

The gravitation of the nearby body causes the liquid on the neighboring planet to move. This in turn, causes tides that ebb and flow. It causes periods of wet and dry surfaces where creatures from the [1] aquatic biosphere can evolve to move to a [2] land biosphere. Indeed, large planetary masses are necessary for biological evolution.

Large planetary masses are necessary for biological evolution.



The moon works with the sun to create tides. The tides create movement of the world's oceans. This causes a rise and fall of water. This exposes aquatic creatures to brief periods outside the water. The creatures evolve, and eventually leave the aquatic environment.

I contend, for *many* reasons not listed here, that the moon was "placed" in orbit around the earth during the Cambrian. This placement created an environment that was friendly for the evolution and porting of life from the [1] aquatic biosphere to the [2] land biosphere.

- I would suggest any one interested in following this "theory" further, please read my blog post about [The Hollow Moon](#).



The Hollow Moon

Why is the moon hollow? This is one of those uncomfortable facts that just doesn't jive up with the conventions of accepted scientific knowledge. Yet, every study has confirmed this to be the case. Here we study this issue in detail.



The Fuselage embedded within the rocks of Victoria Falls

There is evidence that there was an accident (of some sort) that damaged a vessel (of some type). Over the years it has become buried in silt, which later turned into stone. Here we study this issue.

- It also explains WHY there was a sudden and rapid "Cambrian Explosion".

The Presence of the Moon Changed Everything

In contrast to later periods, the Cambrian fauna was somewhat more restricted; indeed free-floating organisms such as jellyfish were actually rare during this time. This was quite unlike the earlier era where there were large swarms of jellyfish, in many sizes (including super-jumbo).

Those earlier life forms that did survive ended up living on or close to the sea floor. Due to catastrophic events that affected the native life forms, mineralizing animals became rarer than in future periods. This was due, in part, to the unfavorable ocean chemistry prevalent at the time.

One of the mysteries of the Cambrian is why there was a jump in the concentration of sulphate in the world's oceans. However, in the Proceedings of the National Academy of Sciences, Canfield and Farquhar attribute the rise in sulphate to the onset of bioturbation.

Or in other words, the burrowing, sluicing, pumping and mixing caused by masses of worms, clams, crustaceans and other animals that began to appear around this time in Earth's history.

Personally, I sit amusedly on the sidelines on this argument. I think all the theories are quite interesting, though a bit over my head. I graciously leave the arguments to those scientists that are far better versed to make these determinations than I am.

The Earth gets a Moon

At a time, around 540 Million years ago, plus or minus 20 million years or so, the presence of the moon created the Cambrian explosion where life began to exist upon the barren landmasses of earth. The moon did not suddenly come into being. It entered orbit with long elliptical swings coming close to the surface of the earth and then swinging away from it. This period of orbital instability lasted millions of years.

485 Ma – Ordovician period

"...the truth is out there," (concerning UFOs)

– John Podesta (Quoted in The Washington Post)

Following the 56 million year period of the Cambrian period, began the Ordovician period.

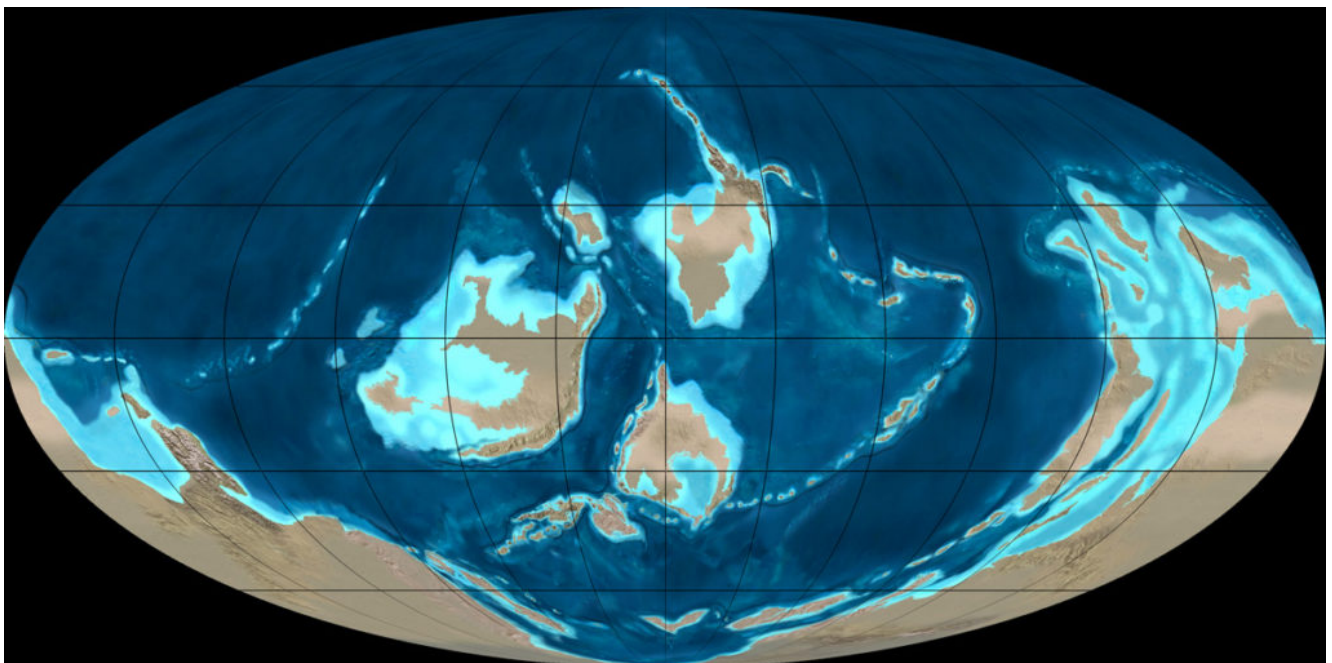
The reader should realize that the Cambrian was one of great promise and even greater disappointment. At that time the earth was rocked with a long series of extinction events; all of which left painful “footprints” on the biodiversity of native lifeforms. Earth during the Cambrian was a contentious time, but this all began to change. The changes were remarkable and are forever recorded in the history books as the Ordovician period.

This period of time lasted from 485 to 443 million years ago. Life continued to flourish during the Ordovician as it did in the beginning of the Cambrian. But the flourishing of life during this period apparently was much more successful. The long term extinctions found during the Cambrian was absent here, as was the apparent frequency of mass extinctions. However and ultimately (unfortunately), the end of the period was marked by a very significant mass extinction.

Life Forms

During this period of time, life (still) had yet to fully and completely diversify on land. While there were forays onto the land during this period, the great diversity of land based life was still limited. For the most part, fishes and other creatures remained in the ocean and scant few still had yet to expand upon the land. As in the Cambrian, invertebrate; mostly types of mollusks and various arthropods, dominated the oceans. Fish, the world's first true vertebrates, continued to evolve, and those with jaws may have first appeared late in the period (maybe around 450 Ma). This was still a world of bare rocky land masses, yet there were elements of the beginnings of land based plants; Larger than mere fungi, mosses and other small plants. Perhaps the first ferns began to make their appearance, as well as other (simpler) plants.

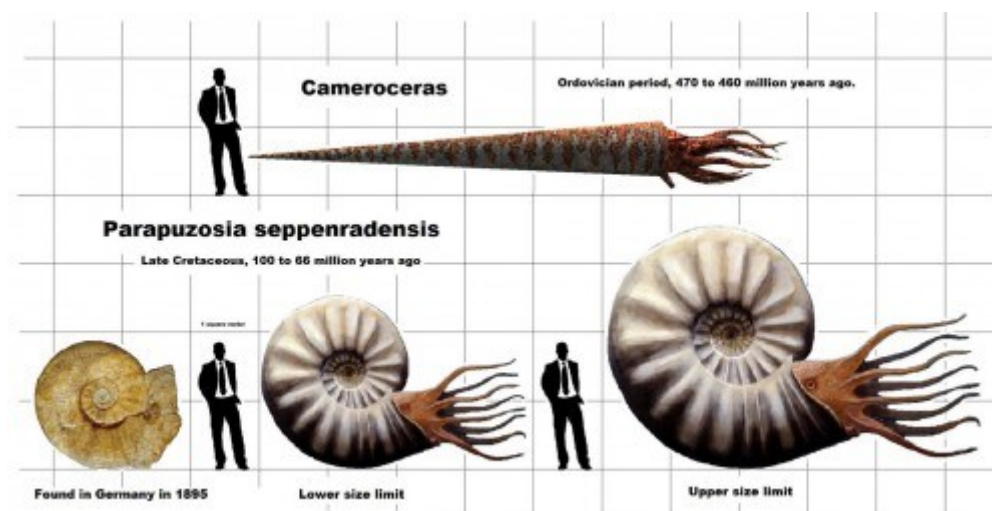
What this manifested as was wondrous. This was a time of extreme biodiversity in the seas; because the harsh destruction of life during the Cambrian was permitted to lapse, and in its stead was a great rebirth and reintroduction of "new" and "improved" life forms.



During the Ordovician Period, the world was a strange one indeed. It certainly did not look like the planet of today. The tilt of the earth was different, which meant that there were seasons of different intensity and of different duration. The world has numerous continents of which many had

long strings of islands and landmasses . This enabled the propagation of early plants through the various complexities of the currents in the oceans. Sea life evolved greatly because the conditions permitted it at this evolutionary period of time.

It is generally considered that this period was full of various unknown and poorly understood creatures because most were soft shelled, and thus did not fossilize readily. But that has changed in the last number of years, as “soft shelled” fossils had been discovered from the Ordovician period.



Ancient Cephalopods. These creatures tended to grow up to enormous sizes.

Discoveries in the Fezouata Biota, holds some of the oldest known marine animals on Earth. In it, troves of detailed Ordovician fossils were found that had fossilized “soft tissues”. This is an amazing rarity in the world of anthropology. And, this has given scientists an amazing look into the world of the Ordovician period. This has enabled scientists to conduct studies on arthropods such as anomalocaridids, cheloniellids and marrellomorphs. Not to mention the very interesting and terrifying armored, worm-like creature (Plumulites bengtsoni) and a giant, filter-feeding arthropod (Aegirocassis benmoulae).



Aegirocassis benmoulae. *Aegirocassis* is an extinct genus of anomalocarid arthropod belonging to the family Hurdiidae that lived 480 million years ago during the early Ordovician. It is known by a single species, *Aegirocassis benmoulae*. A fossil of *A. benmoulae* from the Fezouata biota, Morocco was discovered by and named after Mohamed Ben Moula, a fossil collector who recognized its rare characteristics and brought it to the notice of a professional paleontologist, Peter Van Roy, at the Ghent University in Belgium.

We now know today that the anomalocaridids, an ancestor of modern-day arthropods such as butterflies and spiders, are thought to have lived and died during the Cambrian, but they survived for yet another 25 million years.

- Read about the discovery of soft-skinned fossils from the Fezouata Biota [HERE](#).

The Age of the Fishes

During the Ordovician period existed a wonderland of great marine diversity. Creatures consisting of invertebrates that diversified into many new types (e.g., long straight-shelled cephalopods). Early corals, articulate brachiopods (Orthis, Strophomena, etc.), bivalves, nautiloids, trilobites, ostracods, bryozoa, many types of echinoderms (crinoids, cystoids, starfish, etc.), branched graptolites, and other taxa all became quite common.

The seas became full of such a great variety of life that it was a wonderland of amazement. One can only imagine what it must have been like. I would imagine a wonderland of all kinds of corals with a multitude and variety of fishes and other marine life. I also imagine that the world is still dominated by many soft skinned and soft boned creatures such as jellyfish which most certainly added to the great color and display of life at that time.



The Ordovician Period is the second period of the Paleozoic Era. This period saw the origin and rapid evolution of many new types of invertebrate animals which replaced their Cambrian predecessors. About 480 million years ago, in the Ordovician period, life forms diversified dramatically and gave rise to many of the marine forms familiar today.

Articulate brachiopods have toothed hinges and simple opening and closing muscles, while inarticulate brachiopods have untoothed hinges and a more complex system of muscles used to keep the two halves aligned. In a typical brachiopod a stalk-like pedicle projects from an opening in one of the valves, known as the pedicle valve, attaching the animal to the seabed but clear of silt that would obstruct the opening.

The Bivalvia comprise a class of marine and freshwater molluscs that

have laterally compressed bodies enclosed by a shell consisting of two hinged parts. They have no head, and they also lack a radula. Bivalves include clams, oysters, cockles, mussels, scallops, and numerous other families that live in saltwater, and well as a number of families that live in freshwater.

Nautiloids are a large and diverse group of marine cephalopods (Mollusca) belonging to the subclass Nautiloidea that began in the Late Cambrian and are represented today by the living Nautilus and Allonautilus. Nautiloids flourished during the early Paleozoic era, where they constituted the main predatory animals, and developed an extraordinary diversity of shell shapes and forms. Some 2,500 species of fossil nautiloids are known, but only a handful of species survive to the present day.



Many creatures are now extinct. We know what they looked like from fossil evidence and biology or related creatures.

Trilobites are a well-known fossil group of extinct marine arthropods that form the class Trilobita. Trilobites form one of the earliest known groups of arthropods. The first appearance of

trilobites in the fossil record defines the base of the Atdabanian stage of the Early Cambrian period (521 million years ago), and they flourished throughout the lower Paleozoic era before beginning a drawn-out decline to extinction when, during the Devonian, all trilobite orders except Proetida died out. Trilobites finally disappeared in the mass extinction at the end of the Permian about 250 million years ago. The trilobites were among the most successful of all early animals, roaming the oceans for over 270 million years.

Ostracods, or ostracodes, are a class of the Crustacea (class Ostracoda), sometimes known as seed shrimp. Some 70,000 species (only 13,000 of which are extant) have been identified, grouped into several orders. They are small crustaceans, typically around 1 mm (0.039 in) in size, but varying from 0.2 to 30 mm (0.0079 to 1.1811 in) in the case of *Gigantocypris*. Their bodies are flattened from side to side and protected by a bivalve-like, chitinous or calcareous valve or "shell". The hinge of the two valves is in the upper (dorsal) region of the body. Ostracods are grouped together based on gross morphology, but the group may not be monophyletic; their molecular phylogeny remains ambiguous.

The Bryozoa, also known as Polyzoa, Ectoprocta or commonly as moss animals, are a phylum of aquatic invertebrate animals. Typically about 0.5 millimetres (0.020 in) long, they are filter feeders that sieve food particles out of the water using a retractable lophophore, a "crown" of tentacles lined with cilia.

Echinoderms are a phylum of marine animals. The adults are recognizable by their (usually five-point) radial symmetry, and include such well-known animals as starfish, sea urchins, sand dollars, and sea cucumbers.

Crinoids are marine animals that make up the class Crinoidea of the echinoderms (phylum Echinodermata). They live both in shallow water and in depths as great as 6,000 metres. Sea lilies refer to the crinoids which, in their adult form, are attached to the sea bottom by a stalk. Feather stars or comatulids refer to the unstalked forms.



This is an exceptionally well preserved multiple example of a distinctive Camerate crinoid type. Scyphocrinites have been found in Asia, North America, Europe, and Africa. Instead of being rooted to the ground like most crinoids, Scyphocrinites had a lobolith, which is a floating sphere that keeps an animal afloat in water. Unlike other crinoids, Scyphocrinites hung upside down at the surface. The dark 3D crinoid contrasts beautifully against the muted purple matrix. It would make a fantastic collection centerpiece, or, distinctive decorative display piece.

Graptolithina is a class in the animal phylum Hemichordata, the members of which are known as graptolites. Graptolites are fossil colonial animals known chiefly from the Upper Cambrian through the Lower Carboniferous (Mississippian).

Atmosphere

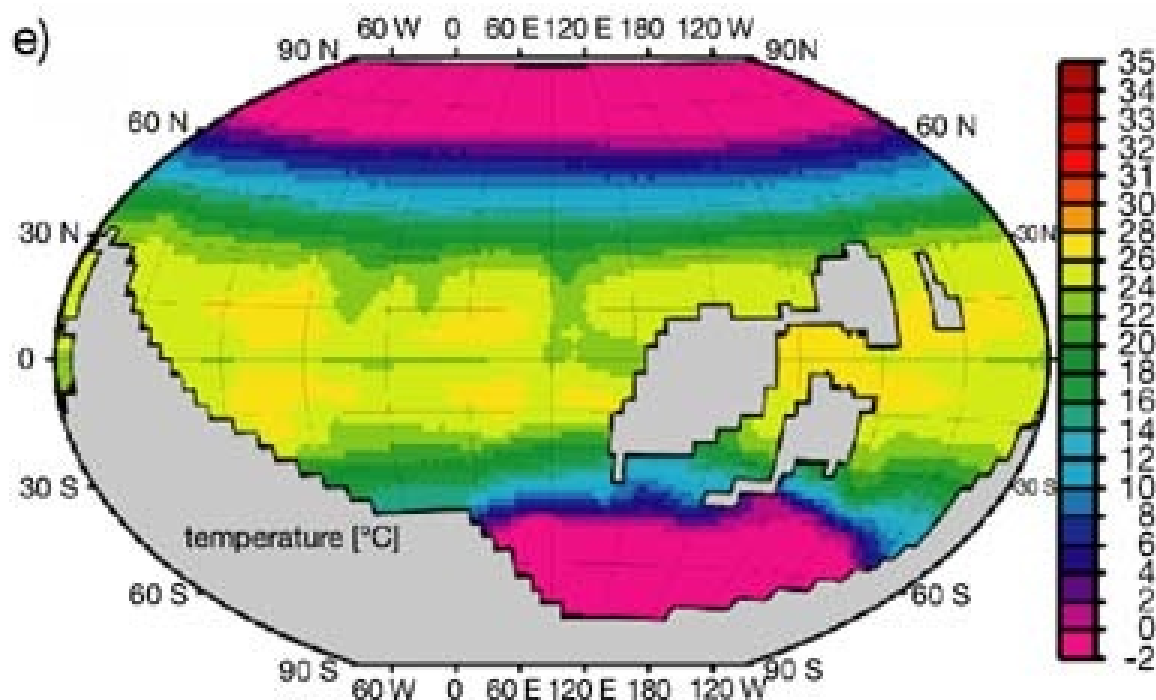
The atmosphere continued to change during this time, and the amount of oxygen continued to increase. Through most of this period the oxygen level was only about 68 % of our current modern level. Mean atmospheric CO₂ content was still at 15 times our current (pre-industrial) level. The air, to us humans today, would be considered rather stinky and polluted.

But that doesn't really matter. Nothing really lived on the land breathing the air. The vast bulk of life was underwater; in the seas and oceans.

It was a warmer time.

For most of the Ordovician period, global conditions were as stifling as during the preceding Cambrian; air temperatures averaged about 120 degrees Fahrenheit *worldwide*, and sea temperatures may have reached as high as 110 degrees at the equator.

It is unlikely that there were any ice caps at either the north or south poles.

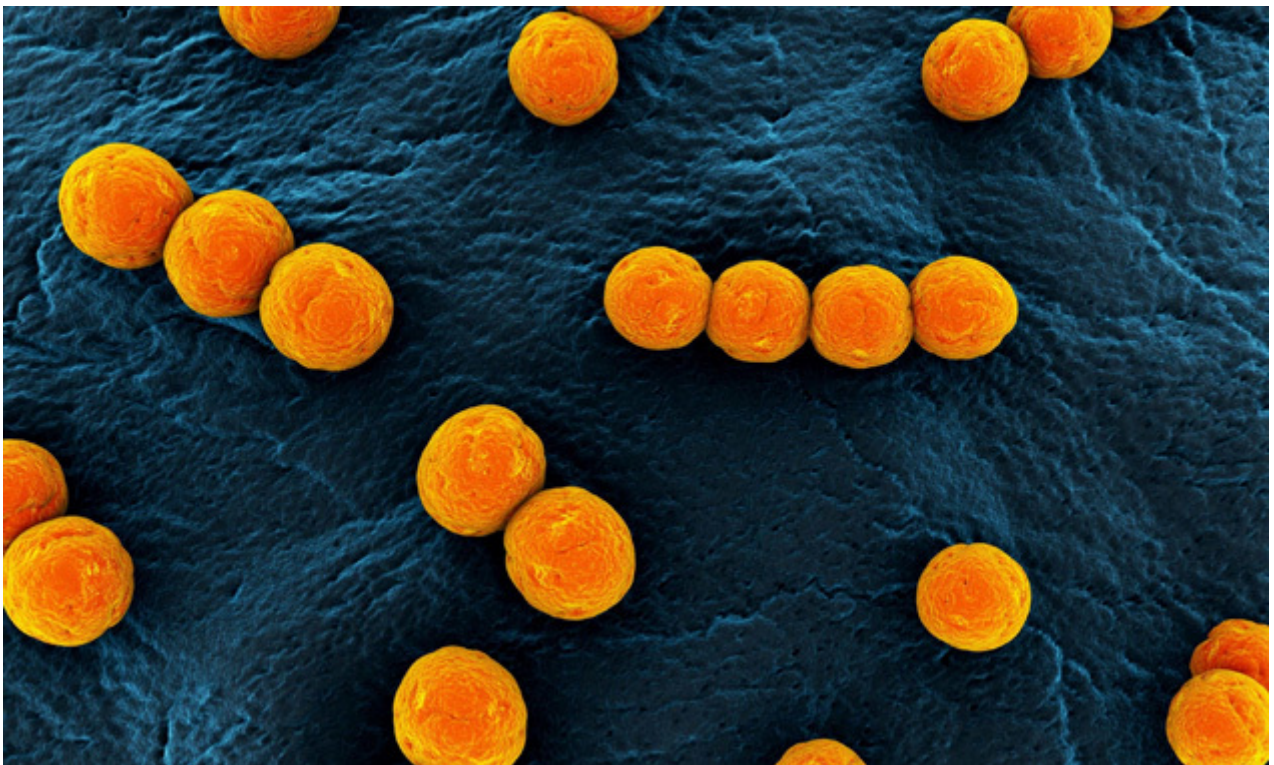


Sea-surface temperatures predicted for Late Ordovician with 8x CO₂ and low sea levels. Hermann *et al.* (2004).

Sea Surface Temperatures during the late Ordovician period. By the end of the Ordovician, however, the climate was much cooler, as an ice cap formed on the south pole and glaciers covered adjacent landmasses. Biologically, these early continents were important only insofar as their coastlines provided sheltered habitats for shallow-water marine organisms; no life of any kind had yet conquered land.

Super - Bugs

Leading hospital “superbugs,” known as the enterococci were spawned at this time. They arose from an ancestor that dates back 450 million years according to a study led by researchers from Massachusetts Eye and Ear.



Enterococci are Gram-positive cocci that often occur in pairs (diplococci) or short chains, and are difficult to distinguish from streptococci on physical characteristics

alone. Two species are common commensal organisms in the intestines of humans: *E. faecalis* (90–95%) and *E. faecium* (5–10%). Rare clusters of infections occur with other species, including *E. casseliflavus* , *E. gallinarum* , and *E. raffinosus* .

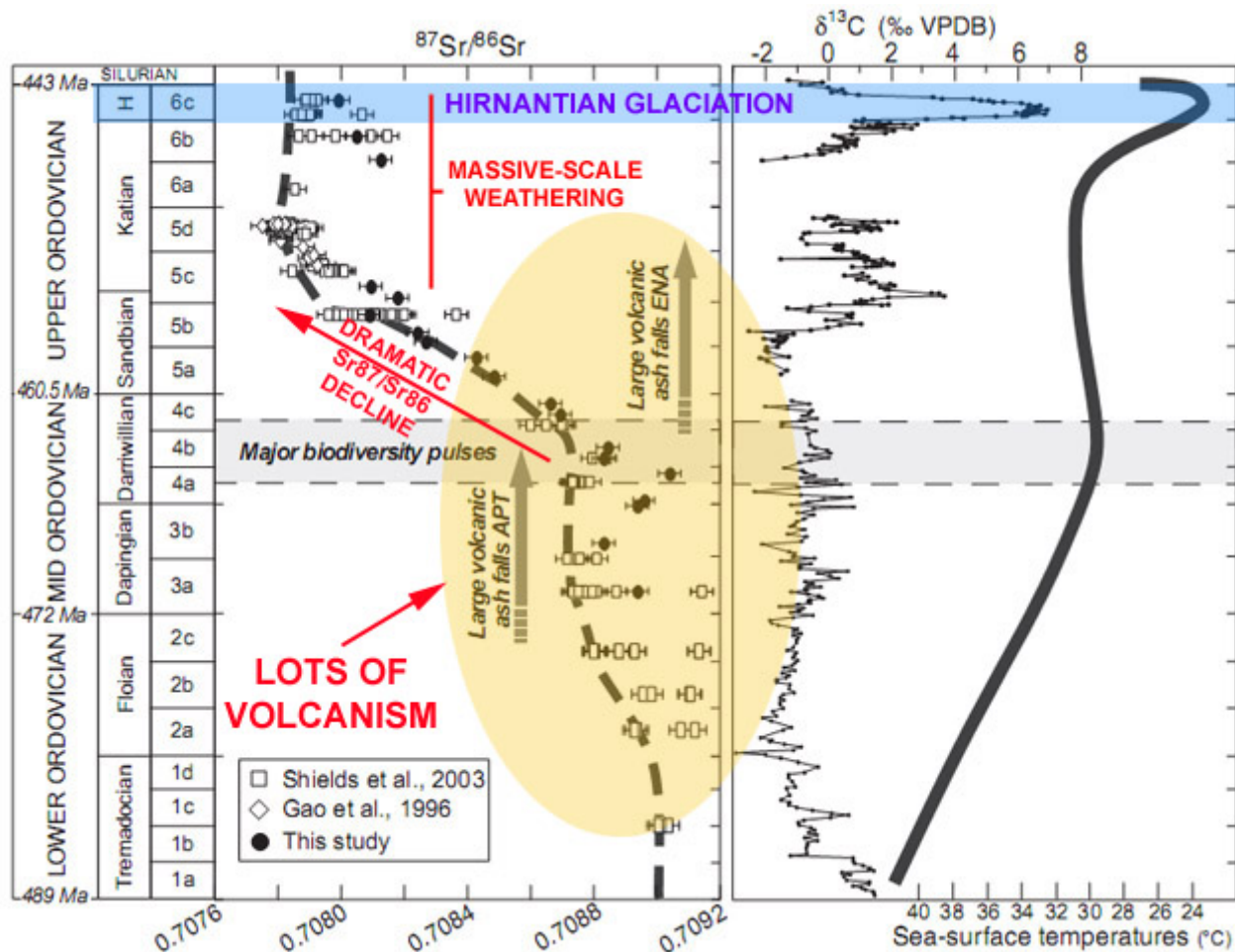
The results of this study was published online in Cell. In the study authors shed light on the evolutionary history of these pathogens. They evolved nearly indestructible properties and have become leading causes of modern antibiotic-resistant infections in hospitals. Read about it [HERE](#).

Extinction Events

The Ordovician Period consists of life on the Earth between two major extinction events. The period started at a major extinction event known as the Cambrian–Ordovician extinction event. It occurred about 485 Ma (million years ago), and started this period; the Ordovician period which lasted for about 44.6 million years. This event terminated at the Cambrian period at the 490 Ma date. For purposes of convenience, scholars define the termination of this period by another extinction event. The Ordovician period ended with the Ordovician–Silurian extinction event.

The Ordovician period started with the Cambrian–Ordovician extinction event.

The Ordovician period ended with the Ordovician–Silurian extinction event.



This is a very interesting graph that tells the entire story of the Ordovician period in one nice and neat executive summary. The reader can clearly see that this period was dominated by a large series of volcanic events, possibly triggered by the movement of the continents on the surface. This volcanic activity affected many things, but there is evidence that the movement of the continents helped, through various methods (under debate) to cool down the ocean water temperature to a level compatible with marine life. Indeed 40°C is far too hot a temperature for marine life and corals to survive. The reader should note that the “goldilocks” period of marine life “explosion” occurred during the Mid-Ordovician period around the Damwillian period when the sea surface temperature was around 32 to 33°C. The upper-Ordovician period showed a gradual cooling of the planet and the seas eventually resulting in glaciation and other cooler weather patterns.

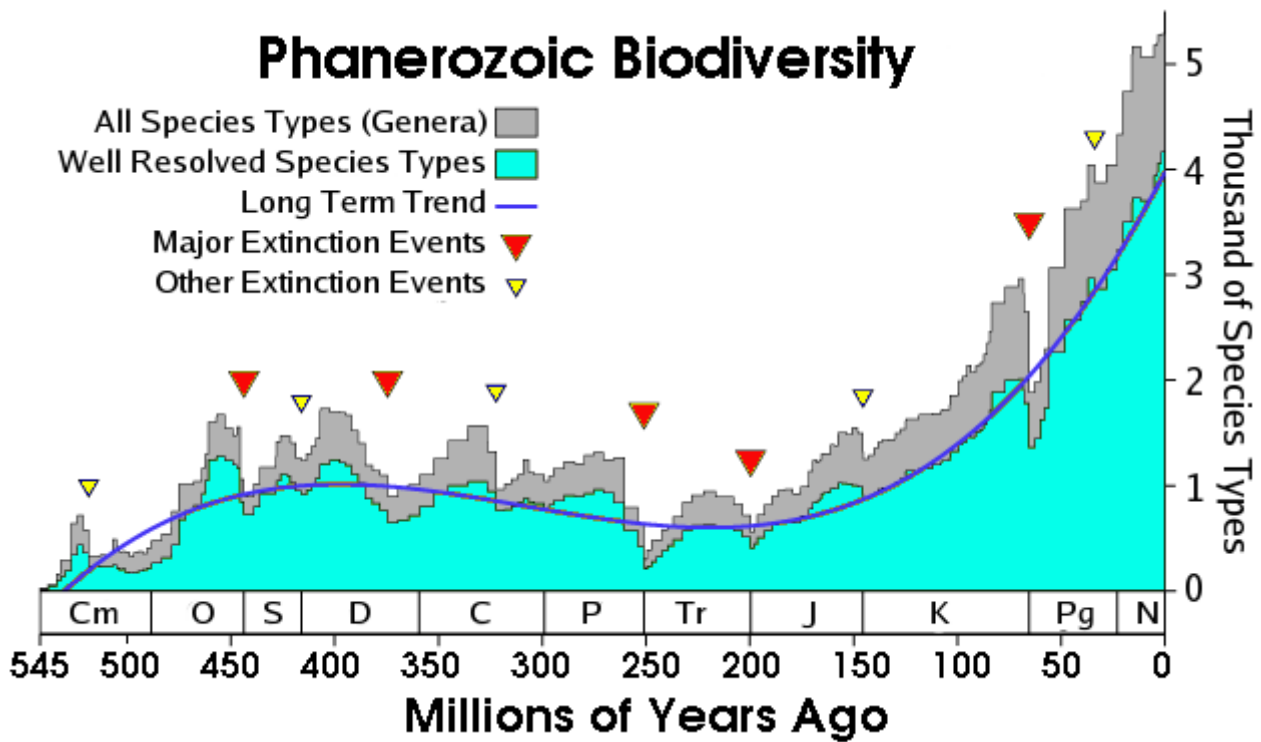
There are many interesting theories regarding these extinction events.

Some posit that there is a “dark” (visually undetected) companion to our solar system that pulls or propels stellar objects from the Oort cloud to plummet upon the earth. Others argue that the larger gas giants, namely Jupiter exerts gravitational influences that hurl rocky bodies out of the solar system and some cycle back to eventually hit the earth.

A particularly interesting theory regards the presence of dark matter in and about our galaxy, and how the orbit of our solar system up and down; in and out of the galactic plane causes dark-matter gravitational influences on stellar or rocky bodies is particularly intriguing. This theory is by Lisa Randall, a theoretical physicist at Harvard University. She puts forth a curious and interesting theory for periodic mass extinctions, which she describes in her book, “Dark Matter and the Dinosaurs.”

Cambrian–Ordovician extinction event

To study and observe this period we should start at the beginning. Let’s start at the end of the Cambrian Period. Geologists refer to this period as the delineation line between the Cambrian Period and the Ordovician Period. It is most noteworthy due to a rather large extinction that occurred at that time.



Extinction events over time.

The Cambrian–Ordovician extinction event occurred approximately 488 million years ago. As stated previously, this early Phanerozoic Eon extinction event eliminated many brachiopods and conodonts, and severely reduced the number of trilobite species. It was preceded by the less-documented (but probably worse) End Botomian extinction event around 517 Ma, and the Dresbachian event at about 502 Ma. Combined, these combined extinction events were very serious and greatly affected the native life, and atmosphere on the planet.

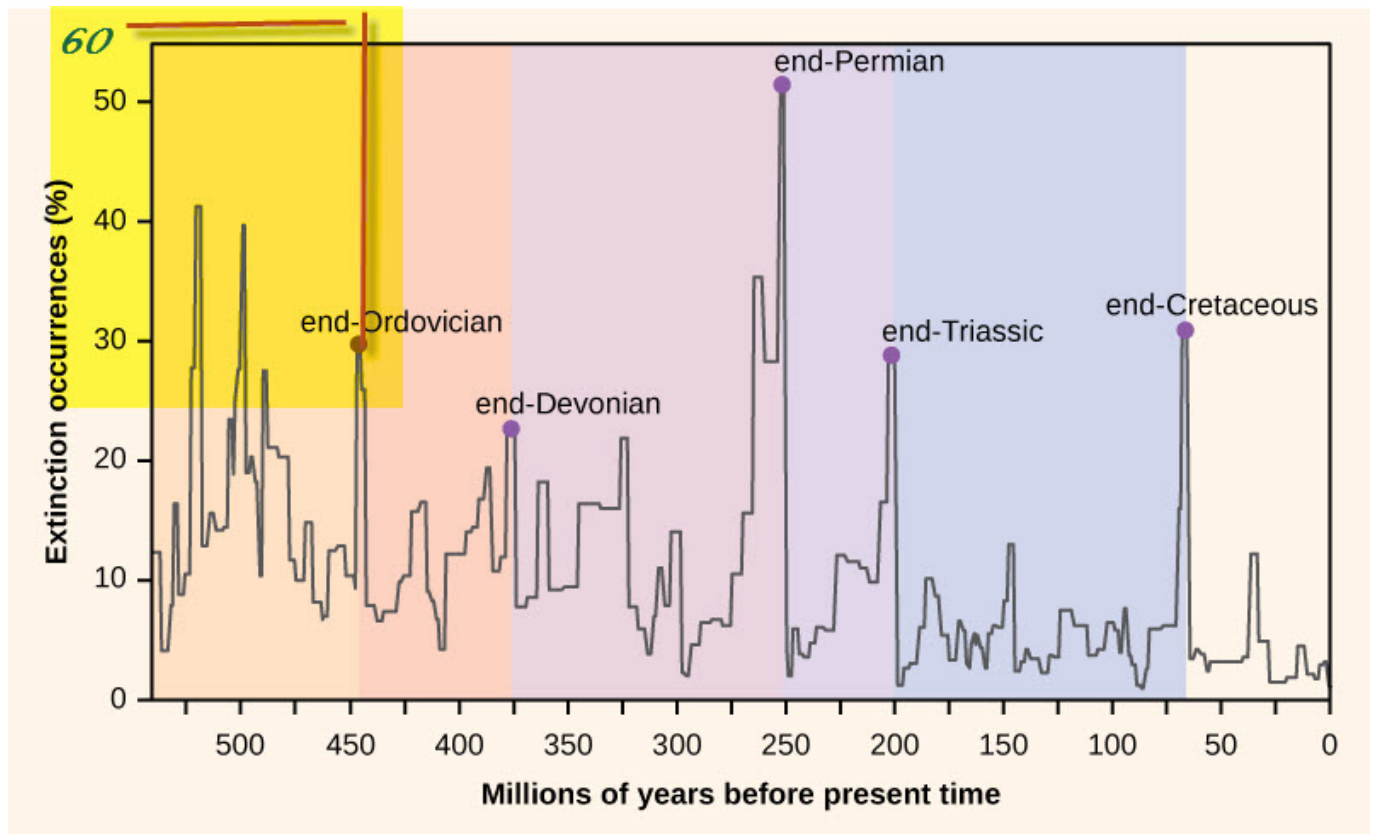
Ordovician–Silurian extinction event

The Ordovician Period ended with the Ordovician–Silurian extinction event. This event occurred at about 443 Ma. It was a single cataclysmic event that wiped out a solid 60% of marine genera. (The reader must remember that the vast bulk of life on the planet at that time was marine life.)

It was the second-largest of the five major extinction events in Earth's

history in terms of percentage of genera that went extinct and second largest overall in the overall loss of life.

Between about 450 Ma to 440 Ma (million years ago), two pulses of extinction, separated by one million years, appear to have happened. During this extinction event there were several marked changes in biologically responsive carbon and oxygen isotopes. This complexity may indicate several distinct closely spaced events, or particular phases within one event.



Extinction events follow a periodic cycle suggestive of interstellar impacts. This interesting graph shows a plot of number of species going extinct over time. The events show a more or less regular pattern of extinction. This pattern is suggested of extraterrestrial body impact of great severity. The severity of such impact would have altered the climate on the earth in various dramatic ways and affected the survival of the known species present. There is no question that the end-Ordovician extinction event was a severe event.

The previous belief, during the mid-1980's into the early-1990's, was that interstellar derived impact events, such as a meteor impact or impacts,

caused this extinction period. But due to political concerns in the United States, perhaps to prevent funding sources from drying up, most of academia embraced the idea of “global warming” as the consequence of tectonic plate movement as the root cause of this (and other) extinction event(s).

Political Considerations

Therefore, in the interests of continued funding for those scientists who research these arcane matters, I must concur that the immediate cause of extinction appears to have been the movement of Gondwana into the South Polar Region. This led to global cooling, glaciation and consequent sea level fall. The falling sea level disrupted or eliminated habitats along the continental shelves.

In the United States, most research funding provided to universities and colleges originate out of governmental agencies. Very little funding is obtained from private concerns and industry. Thus, those who work at universities depend on funding grants (mostly through the government) to get paid. College and university pay scales are generally low, and professors use grants to supplement their income.

Thus, depending on the political climate at the time, schools and universities will compete for grants that support whatever political philosophy is prevalent at the time.

Ronald Reagan

During the 1980's under Ronald Reagan, a vast bulk of research was devoted to such programs as “Star Wars” ICBM laser defense system, NASP and the “Orient Express” space plane (Known as the “great laugh” by conventional liberal news media, the project went black and was forgotten until 2016 when it resurfaced publicly. Eventually picked up for public development elsewhere; Oxford's Reaction Engines Ltd (REL) announced it has received a £10,000 development contract with ESA, so it can work on its revolutionary Synergistic Air-Breathing Rocket Engine (SABRE). This technology can work both in the Earth's atmosphere and in space - which is crucial to space planes. The grant adds to the UK Government's commitment to invest £60 million in SABRE. The project has also seen investment from defense company BAE Systems and the US Air Force.) , and the “Freedom” Space Station.

Bill Clinton

During the Clinton Presidency, most funding sources changed in support of “Global Warming”, “Child Safety”, the dangers of breast implants and silicone, the dangers of Smoking, and other (now well known) initiatives.

George Bush II

Under the Bush II presidency, the shape of the grants became devoted towards projects designed to reduce the scope of Terror. As well as all sorts of developments toward military technology and crowd control technology and internet surveillance.

Barrack Obama

Meanwhile under the Obama administration it changed again to support initiatives related to "diversity", "international cooperation", global warming, and full-scale world surveillance. In support of these, the universities produced studies and findings concurrent with the desired political belief system at that time.

The problem with this is that professors and their students would doctor up research data, and provide fake findings in order to obtain a steady funding stream. Like below...

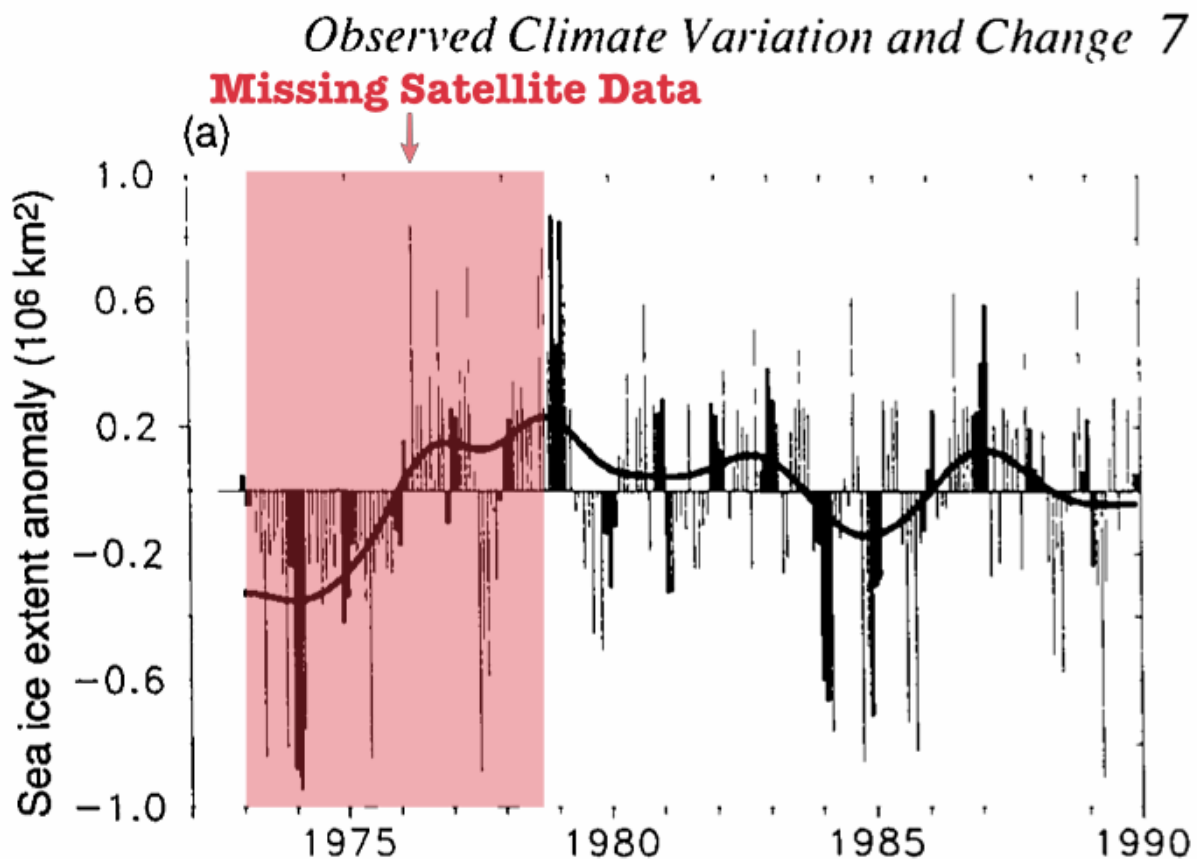


Figure 7.20: (a) Northern Hemisphere, and (b) Southern Hemisphere sea-ice extent anomalies. **Data from NOAA (USA).**

Global warming is a hoax used to siphon more money into programs that are saturated with "kick-back" schemes. Here is a typical example. Here is scientific data that PROVES that cli-

mate has been warming. There's only one tiny problem with it. NOAA didn't have any satellite data to support these findings. Their first NOAA satellite was in the late 1970's. They certainly didn't have any in the 1960's. But, you know what, during the Obama Administration, you could get millions of dollars in funding if you could prove that global warming was real. What a scam! Yet, you can believe it if you want. No skin off my back, just don't expect me to go along with your delusions. Just like I don't expect you, the reader, to go along with everything that I am saying either.

At this late date, it seems silly to parse the exact causes of the extinction events. But, actually, the more that we learn about the mechanisms of our solar system, the better we can understand ourselves. It is important.

Thus, whether the causes were extraterrestrial or due to a combination of terrestrial geologic processes should be given all consideration; within reason, and free of political considerations. (Regardless of one's own political inclinations.)

Cephalopods – The first Individualized Souls on the Earth

All creatures have souls. Humans have a transitory soul that is being cultivated. Dogs and cats have hive / matrix souls (I am often confused by the differences). The Cephalopods have an individualized soul configuration.

As creatures evolved, they established formalized and discrete soul shapes. Most settled into basic and primitive forms. Many settled upon Hive, and Matrix forms. However, the Cephalopods, they had an associative individualized soul configuration. As such, they established an apparent "Heaven" and carved or brazed the way for subsequent evolution towards individualized soul forms.

Hive and Matrix soul configurations functionally dwell in both their Heaven and physical worlds simultaneously. That is great, but it is actually counter productive for soul and spiritual growth.

Thus, for individualized soul constructs, we have a partitioning of the Heaven and the physical experiences. (Not all species have this, but we do.) This species; the cephalopods were the first individualized soul constructs in our planetary environment.

This ability, the ability to partition the physical reality from the heavenly realities leads toward soul growth and construction ability. For now, we can consider the ability to grow, compose, engineer and repair souls into other things to be a sign of intelligence.

The reader might wonder why this kind of sea going creature would hold or develop an individualized soul. Well there are many reasons for this. But the reader must realize that the establishment of the physical attributes of a given physical creature would cause an associate adaptation of the soul quanta.

For the molluscan class Cephalopod, these exclusively marine animals are characterized by [1] bilateral body symmetry, a [2] prominent head, and a [3] set of arms or tentacles (muscular hydrostats) modified from the primitive molluscan foot. This combined with a [4] brain that recognized the concept of “self” was all that was necessary to develop into an individualized soul construct; later an archetype.

Nothing remains of them today. They evolved through to extinction. All that remains of them are (what I personally like to refer to as) the “quantum ruins” that exist on the discrete quantum levels. There were numerous subspecies and each one developed into their own soul configuration, with most of them being closely related in numerous ways.

Cephalopods Edit their own Genes to Faciliate Evolution

We now know that the species has edited their own DNA to evolve. Just when we thought octopuses couldn't be any weirder, it turns out that they and their cephalopod brethren evolve differently from nearly every other organ-

ism on the planet.

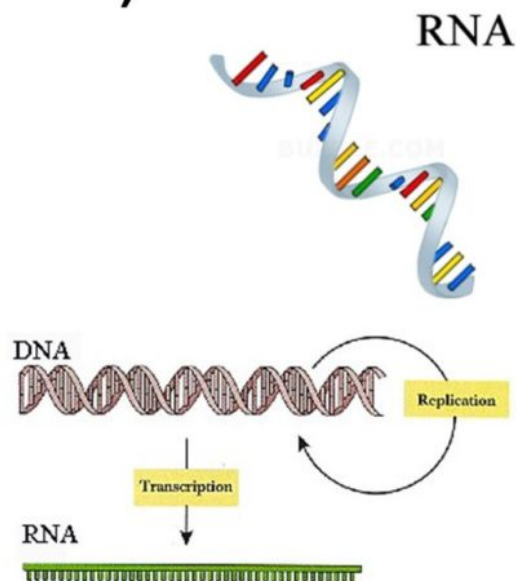
These deep-sea cephalopods are well known for changing color to match their surroundings, thus evading predators and sneaking up on food sources. What the new findings prove is that the octopus' skin isn't just responding to instructions from the brain and eyes - it's actually reacting to light and changing color itself.

It's all thanks to the chromatophores under the skin of an octopus: very small, pigmented organs packed with chemicals. As the muscles around them expand and contract, the colour they display changes. Thousands of these chromatophores are packed just below the top layer of skin. Go [HERE](#).

In a surprising twist, scientists have discovered that octopuses, along with some squid and cuttlefish species, routinely edit their RNA (ribonucleic acid) sequences to adapt to their environment.

Ribonucleic Acid (RNA)

- A nucleic acid that consists of a long chain of nucleotides
- Helps put the genetic code into action
- Part of DNA base sequence turned into RNA
 - Helps makes proteins



A nucleic acid that consists of a long chain of nucleotides. Helps put the genetic code into action. Part of DNA base sequence turned into RNA. Helps makes proteins.

This is weird because that's really not how adaptations usually happen in multicellular animals. When an organism changes in some fundamental way, it typically starts with a genetic mutation – a change to the DNA. This method

is what is considered to be “typical”, and thus “normal”.

Those genetic changes are then translated into action by DNA’s molecular sidekick, RNA. You can think of DNA instructions as a recipe, while RNA is the chef that orchestrates the cooking in the kitchen of each cell, producing necessary proteins that keep the whole organism going. But RNA doesn’t just blindly execute instructions – occasionally it improvises with some of the ingredients, changing which proteins are produced in the cell in a rare process called RNA editing.

When such an edit happens, it can change how the proteins work, allowing the organism to fine-tune its genetic information without actually undergoing any genetic mutations. But most organisms don’t really bother with this method, as it’s messy and causes problems more often than solving them.

In 2015, researchers discovered that the common squid has edited more than 60 percent of RNA in its nervous system. Those edits essentially changed its brain physiology, presumably to adapt to various temperature conditions in the ocean. Now the team is back with an even more startling finding – at least two species of octopus and one cuttlefish do the same thing on a regular basis. To draw evolutionary comparisons, they also looked at a nautilus and a gastropod slug, and found their RNA-editing prowess to be lacking.

"This shows that high levels of RNA editing is not generally a molluscan thing; it's an *invention* of the coleoid cephalopods,"

-Joshua Rosenthal of the US Marine Biological Laboratory.

The researchers analysed hundreds of thousands of RNA recording sites in these animals, who belong to the coleoid subclass of cephalopods. They found that clever RNA editing was especially common in the coleoid nervous system.

"I wonder if it has to do with their extremely developed brains,"

-geneticist Kazuko Nishikura from the US Wistar Institute, who wasn't involved in the study, told Ed Yong at The Atlantic

It’s true that coleoid cephalopods are exceptionally intelligent.

- There are [1] countless riveting octopus escape artist stories out there.

- Not only that, but there is [2] evidence of tool use.
- There is [3] this eight-armed guy at a New Zealand aquarium who learned to photograph people. (Yes, really.)

Therefore, it's certainly a compelling hypothesis that octopus smarts might come from their unconventionally high reliance on RNA edits to keep the brain going.

"There is something fundamentally different going on in these cephalopods,"

-Rosenthal.

Is there any doubt that these creatures were not the FIRST ambulatory intelligences to occupy our Nursery World under the direction of the <redacted>? It's not just that these animals are adept at fixing up their RNA as needed – the team found that this ability came with a distinct evolutionary trade-off, which sets them apart from the rest of the animal world.

In terms of run-of-the-mill genomic evolution (the one that uses genetic mutations, as mentioned above), coleoids have been evolving really, really slowly. The researchers think that this has been a necessary sacrifice – if you find a mechanism that helps you survive, just keep using it.

"The conclusion here is that in order to maintain this flexibility to edit RNA, the coleoids have had to give up the ability to evolve in the surrounding regions - a lot,"

-Rosenthal

The findings have been published in *Cell*.

Significance of RNA Editing

Perhaps there is something else going on with the Cephalopods.

Instead of thinking that the Cephalopods have evolved in such a way to be able to edit their RNA, maybe what is going on is that their species "gradu-

ated” and were permitted to evolve into an approved archetype. As such, there is most certainly, a restructuring of DNA in both the physical realm as well as the non-physical realm.

I argue that this is exactly what happened with the Cephalopods. They have evolved to a point where their sentience was recognized and stable. As such, the entities that monitor this sentience nursery have permitted them to graduate. Those members of the species, ready to graduate, were reprogrammed genetically and are now a stable archetype.

Other Ideas

The following is from the article titled “The outer space octopus theory” written by Jazz Shaw and Posted at 8:41 pm on May 16, 2018 on [HotAir](#).

A scientific study has been released offering the controversial claim that there’s a decent chance the octopus (and the rest of the cephalopods) arrived on Earth in the form of frozen eggs 250 million years ago and actually evolved on another world. (Express UK)

The paper suggests that the explanation for the sudden flourishing of life during the Cambrian era – often referred to as the Cambrian Explosion – lies in the stars, as a result of the Earth being bombarded by clouds of organic molecules.

But the scientists go on to make an even more extraordinary claim concerning octopuses, which seem to have evolved on Earth quite rapidly something like 270 million years ago, 250 million years after the Cambrian explosion...

“One plausible explanation, in our view, is that the new genes are likely new extraterrestrial imports to Earth – most plausibly as an already coherent group of functioning genes within (say) cryopreserved and matrix protected fertilized Octopus eggs.

“Thus the possibility that cryopreserved Squid and/or Octopus eggs, arrived in icy bolides several hundred million years ago should not be discounted as that would be a parsimonious cosmic explanation for the Octopus’ sudden emergence on Earth circa 270 million years ago.”

This wasn’t the first group to suggest it. In 2015 another research group reached a similar conclusion. The more you read into it, the less crazy it sounds. As we’ve studied the various animals on the planet in ever deeper detail, the octopus really doesn’t seem to fit in with everything else.

They're an invertebrate, but they have 10,000 more protein-coding genes than a human being.

They have problem-solving skills, they use tools and have been observed constructing a shelter out of things like broken coconut shells. (Not just using a shelter they find, the way crabs do, but actually building something.)

And where did that instant camouflage ability come from? Their nervous system is almost entirely unique among animals.

And they just don't look right. Most of the animals you see on the land, in the water or in the air follow a basic pattern. There's a central body with four protruding limbs and a head of some sort. Even the animals like snakes that don't appear to have legs have vestigial limbs inside.

The insects made the switch to six legs but the basic layout is still the same. (Don't get me started on the centipedes. They're probably from another world also.)

And then there are the cephalopods. Eight to ten limbs sticking out of a central mass with a huge brain, eyes with structures resembling a camera (like ours, actually) and a host of other differences.

If you happen to be a fan of the theory of panspermia, is it really such a crazy idea? Dormant cells get blown out into space on some other planet, hitch a ride on some rocks and debris and survive in a dormant state until they crash land someplace else where they can take root. Maybe that explains why the octopus is just so darn weird.

In any event, if you want to amuse yourself for a couple of minutes, check out some of these GIF's. It's beyond amazing.

The Amazing Cephalopods

Using a bowl as a kind of mobile home...

[via GIPHY](#)

Being able to camouflage themselves expertly...

[via GIPHY](#)

Unscrewing a jar from inside...

[via GIPHY](#)

Going for a little walk...

[via GIPHY](#)

Crawling out of the water to attack a crab and returning back to the water...

[via GIPHY](#)

Communicating...?

[via GIPHY](#)

Being able to change size to scare away predators...

[via GIPHY](#)

Defending itself from a shark by making a "suit of armor" out of shells...

[via GIPHY](#)

Using the poisonous stingers of a jellyfish as a weapon...

[via GIPHY](#)

Surviving an attack by a shark and then squirting ink during the "get away"...

[via GIPHY](#)

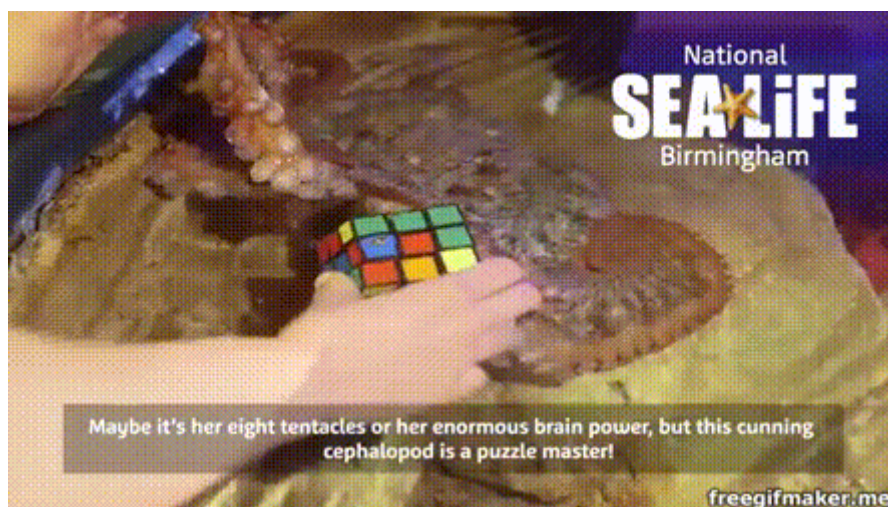
Using ink to blind an attacking creature...

via GIPHY

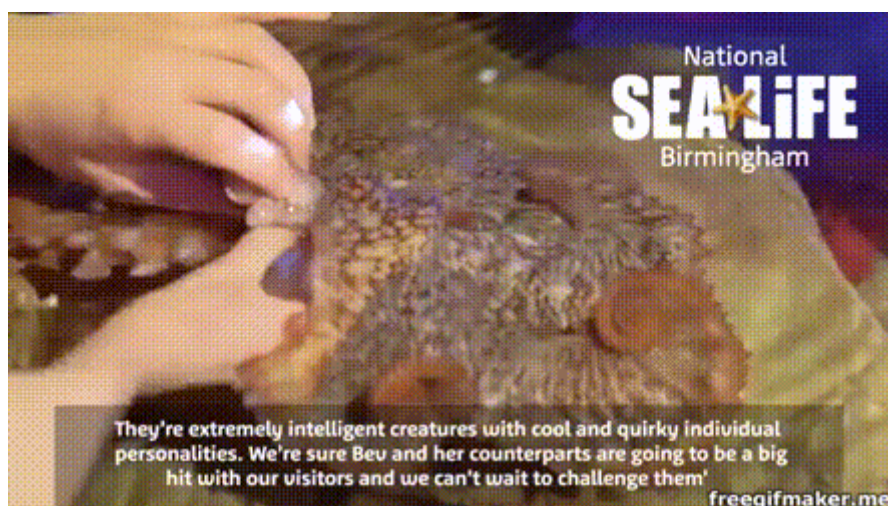
Another instance of pulsating skin coloration...

via GIPHY

And in conclusion, here we have a cephalopod solving Rubik's cube...



Solving Rubics cube. You give an unsolved cube to the cephalopod. It accepts it and wraps it's entire body around it. It then spends some time playing with the cube...



Then you get the cube away from the cephalopod, and low and behold it is completely solved. Can you, my dear reader, do this? Solving Rubics cube.

Conclusions

Cephalopods is one of numerous species who has evolved on earth. They, like humans, evolved through a period of individualized soul construction until they eventually developed sentience. With this came the development of an approved archetype.

Today, we can see what an approved archetype looks like for this species. We can also see what unapproved archetypes looked like in some of their ancestors who no longer exist on this planet.

Take Aways

- Cephalopods are one of numerous intelligent species who has evolved on earth.
- They have edited their RNA.
- They demonstrate some amazing abilities that are currently beyond human technology to accomplish.
- They have an individualized soul construction that has adopted and evolved into an approved archetype.

FAQ

Q: Where do humans fit in with all this?

A: We don't. On the earth, various species have evolved, and advanced. Others have died out. Still others obtained intelligence and sentience. We, humans, are late comers to this process. For us, we do not possess a unified sentience. This is problematic for our species.

Having different sentience's, mean that we possess differing "Heavens", or a tendency for our non-physical realms to segregate in difficult ways. To use a Christian reference, "Service to Self" sentience's would tend to migrate to a Heaven (upon physical death) filled with other selfish people. While those with "Service to Other's" sentience would migrate to a Heaven filled with others of a similar sentience. Depending on your point of view, one person's Heaven is another person's Hell.

Disrupted and disjointed sentience's are problematic in the non-physical reality. As they are never fully able to participate in the "activities" and "benefits" within the non-physical realm.

Of course, my descriptions herein are quite simplistic. It is not that black and white. It is actually a very complex and complicated situation. However, to simplify, let me make a very simple point perfectly clear. One's sentience helps establish one's activity and role within the non-physical realm. (Or Heaven, for those of you are spiritually inclined.)

Q: What happens to members of a species that do not "graduate" into a new archetype?

A: They stagnate. Eventually devolving, or ending up on a dead-end evolutionary track, or evolving into a totally different species all together. In the case of the Cephalopods, members of the species that did not fall into an approved sentience and archetype eventually die off like the Ammonoidea (ammonites) and Belemnoida (belemnites).

Q: What species monitors our planet and assist in sentience selection and advancement into approved and stable galactic archetypes?

A: This species is the <redacted>. They are a pretty ancient species compared to humans, and might be the oldest species that humans have interacted with. they are invertebrates, and possess an understanding and control of our reality that far exceeds anything that we humans can comprehend.

They operate outside the sphere of our reality, but are fundamentally an integral part of our lives.

I suppose the more religious reader might consider them to be akin to “angels” in the Biblical sense. However, their appearance differs from common public perception. They tend to be much larger than humans, and are quite impressive in ability.

MAJestic Related Posts – Training

These are posts and articles that revolve around how I was recruited for MAJestic and my training. Also discussed is the nature of secret programs. I really do not know why the organization was kept so secret. It really wasn't because of any kind of military concern, and the technologies were way too involved for any kind of information transfer. The only conclusion that I can come to is that we were obligated to maintain secrecy at the behalf of our extraterrestrial benefactors.



How to tell if someone is in MAJestic (Part One)

There are many fakers out there. I really do not know what their motivations are. Some might actually have some experience, I don't know. None of them seems to have any kind of background that even approaches the membership I know of. This is how you can sort out the truth from lies.



How to tell if someone is in MAJestic (Part Two)

In this second part, we go into details on how the United States safeguards secrets. We talk about the MJ-12 disclosure and a historical overview of MAJestic. We also discuss the various reasons and restrictions that MAJestic is operating from. It's an important read.



Top Secrets and Flying Pigs

Here I try to explain how the Special Access Program works, and described how the most secret elements of those programs are kept waived and unacknowledged. I discuss why, and use the example of a fictional “Flying Pigs Program”. To understand MAJestic, you need to read this.



The “Sales Pitch” Used to Ask Naval Aviators to Give Up Everything for MAJestic

This is a narrative on how I was offered the role within MAJestic. I was in training to be a Naval Aviator when I was called upon by the base commander. He asked me, and another AOCS, to join. This is how he convinced me.



Feducial Training of ELF-Based MWI Access

This is a small post about the training that we needed to learn into to enter into a transport mechanism for MWI access. You cannot access and switch world-lines without being able to access and “center” the implanted probes. This discusses this procedure and training.



MAJestic Mandated ELF-probe Implantation

This post goes into detail on how the first two “kits” of probes were implanted into my head. All of this procedure took place on the Naval base at the ELF substation. At the time, only myself and the other member of my “cell” aside from the Commander took part in this procedure.



My Very First MWI Portal Egress

This is a narrative of my very first experience in world-line travel. It happened immediately after I gave up flying as a Naval Aviator and joined the MAJestic organization. After training on feducials, and implantation, I joined a group of others and left our world-line.



First Egress Destination - EBP Implantation & Entanglement

This is the narrative of what transpired when I entered the Fixed Dimensional portal. I went to an extraterrestrial medical facility where a EBP was installed within my body. I discuss what happened and my first encounter.



Post EBP Reconstruction -Return To The Navy Barracks

This is my narrative on how I exited the dimensional portal and returned back to the Naval base. I discuss what it was like meeting my fellow classmates and how I was instructed to leave the Navy and become a civilian. This is how it is done and what I experienced.



After Implantation – Lost as an Autonomous Vagabond

This is my story of what happened after I joined MAJestic, and left the US Navy. I was fully actuated, but not yet trained in using my abilities. As such, I was a “loose cannon”, and existed in a very confusing state of reality. I was the real life Jason Bourne.



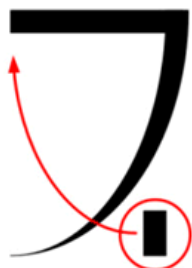
Rescue from the Wilderness – A Special Assignment

This particular post discusses how I found my way back to the Navy again, and began my “training”. I went into the desert to a Naval base located in the middle of the remote desert. At that time, I had no memory that I was part of a secretive military program, and thus the “special assignment” held little tangible meaning for me.



Probe Calibration and World-line Training (Part One)

Here is the story how the set of MAJestic probes, placed inside my skull, were calibrated. This took place after implantation, and involved calibration exercises at the Naval facility at China Lake in California. This is a two part post and discusses the facility and actions there.



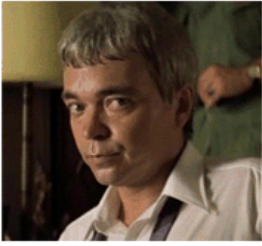
Probe Calibration and World-line Training (Part Two)

This is the second portion of the two part post. In this section we talk about how I was instructed in the operation of calibration of the probes and how I was provided with some limited knowledge in how to modify the programming. It wraps up with my exit from training.



Adventures in World-Line Travel

Here are a selection of stories and experiences that I had when I was involved in world-line travel as part of my MAJestic mission parameters. As such, my experiences gave me some insight into the nature of the universe and of our human species. I hope this is an enjoyable read.



MAJestic Mission Shut-down & Retirement

All programs must end. This is how members of MAJestic that have core kit #2 probes implanted are retired. As they all need to be retired in a specially equipped facility and subject to a life time of monitoring. We cover the entire process and what is involved.



The Ultimate Method to Make Your Computer Safe and Secure

The best way to make your computer secure and private is to have very strong encryption and use an obscure operating system that very few people know about. Here we look at 37 obscure computer operating systems.



What life is like inside the ADC Prison in Arkansas

This post discusses what life is like in a hard labor prison in Southern Arkansas. We discuss hoe squads, food, the hole, commissary, dress, fashion, homosexual culture, prison gangs, murders, relationships and other aspects of life when you are sentenced to “Hard Time”.



What it was like for me to leave America for China.

This is my story on the final moments of my life in the USA. I had just completed my retirement sequence for MAJestic and I was released to enter the monitoring section of my retirement. I decided to get the tattered remains of my life together and move to China and this is what it was like for me to do so.

MAJestic Related Posts – Our

Universe

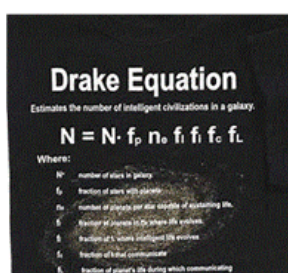
These particular posts are concerned about the universe that we are all part of. Being entangled as I was, and involved in the crazy things that I was, I was given some insight. This insight wasn't anything super special. Rather it offered me perception along with advantage. Here, I try to impart some of that knowledge through discussion.

Enjoy.



The Secrets of the Universe

When people discover what my role was in MAJestic, one of the first things that they ask me is whether or not I can "tell them the secrets of the universe". Certainly, they argue, I must have learned something... Well, I did. Here's the first installment.



The Drake Equation as Viewed by MAJestic

Many people use the Drake Equation to figure out why the average person is not exposed to extraterrestrials. Yet, MAJestic members know the real reason. Here we review the variables within the equation relative to MAJestic understanding and discuss things relatively.



Our Galaxy as Presented to MAJestic

Here is a very general overview of the little that I know about our galaxy. It is a mixture of known and accepted science blended with what I was exposed to in MAJestic. Of course, what is presented is within the limits of what I understand, no more. So it is actually a rough outline.



Sirius is not the home of the Enlightened Extraterrestrials

There is a rather large number of "spiritualists" who are convinced that enlightened beings from the Sirius solar system have come to earth to teach and instruct us humans. I actually find it rather laughable. Here, I review what Sirius actually is and why no great enlightened beings live there.



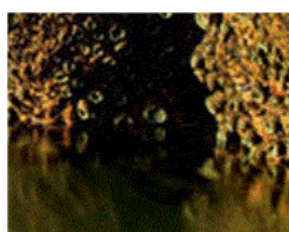
The Alpha Centauri System

Here are my thoughts on the Alpha Centauri System. It is, as always, a mixture of conventional science and what I know through my relationship with MAJestic. Keep in mind, that I am a man with limits. It is but an overview, and what is presented might hold some surprises.



The Fuselage embedded within the rocks of Victoria Falls

There is evidence that there was an accident (of some sort) that damaged a vessel (of some type). Over the years it has become buried in silt, which later turned into stone. Here we study this issue.



The Hammer inside the Rock – The “London Hammer”

Here we have evidence of a shellfish dislodging apparatus or hand-tool that was abandoned millions of years ago. Here we study this artifice. We look at the manufacturing challenges in making such an object and study the environment in which it was lost.



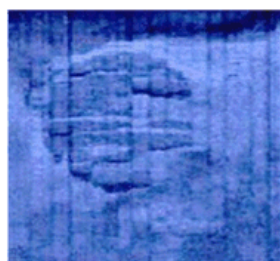
The Hollow Moon

Why is the moon hollow? This is one of those uncomfortable facts that just doesn't jive up with the conventions of accepted scientific knowledge. Yet, every study has confirmed this to be the case. Here we study this issue in detail.



The Mystery of the Lapulapu Ridge

Deep down under the sea in the greatest depths of the Pacific ocean is a mobile underwater city. It's been *operating there for many, many years. It has been leaving* tracks and debris middens all over the place. Here, we look at this in some detail.



Mystery of the Baltic UFO

Sonar scans, and visual confirmation, indicates that a large disc shaped object skimmed the undersea world of the Baltic sea and crashed. Subsequent investigations were suppressed. Now, all that is available for study are a small pile of rocks. Let's look at this mystery shall we.



Mystery of the Bronze Bell found inside a block of coal.

A hand-bell made out of brass was discovered totally encased in a solid block of coal. What is so interesting about this bell is that it depicts a winged humanoid. The only thing is, the coal dates from a time long before birds, where only insects flew in the skies.



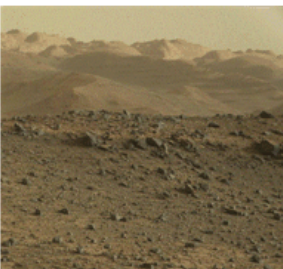
The Oil Lamp Discovered in a block of coal

Many things have been found encased within rock hard coal. One of which is a small "pot". This is obviously the lower part of an oil lamp, common a few thousand years ago. The problem is what is it doing in millions of year old coal?



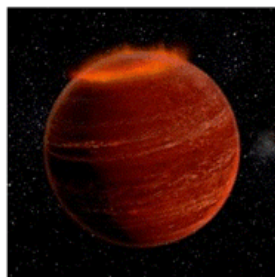
Did Extraterrestrials set up a colony in Pennsylvania?

Sounds really strange doesn't it? Well, here we talk about the possibility of a community of very "unique" red-skinned, horned giants, with firearms were actually a colony of extraterrestrials. It's a long stretch. Yet, we look at them from this prism, as unlikely as it is.



The Oxia Palus Facility.

Here we talk about a facility that I know a lot about. It is a MAJestic aligned facility on the surface of Mars in the Oxia Palus region. It is many things, and was initially a mining operation with a smelting and processing facility. Here we discuss this facility as an overview only.



Let's chat about Brown Dwarf solar systems

Up until a very few years ago, no one knew if Brown Dwarf stars existed. Now we know that they do indeed exist, and that they are everywhere. Most people are unaware of them, but they play an important role as these dwarf stars are the home of many an intelligent extraterrestrial.



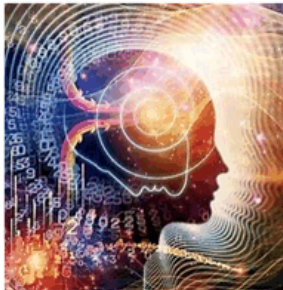
NASA Manned Space Exploration - What happened?

When President killed the Apollo space program, and Jimmy Carter neutered NASA, everyone sat back, fat and content that money was not being wasted and that instead American infrastructure was being taken cared for. Here is the real reason why Apollo and manned space died.



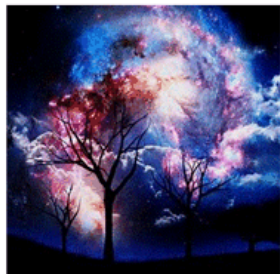
The Disclosure of the CARET Program at PACL

A full unapproved disclosure of a MAJestic related reverse engineering program was released to the public. It concerned the CARET program at PACL. It was quickly attacked and debunked. A music video was even generated as part of it. Here is the full documentation package.



Yes, We Do Live in a Multidimensional Universe

Here we discuss how world-line travel is possible. We look at the physics of the MWI and the mathematics involved. We also discuss an overview of Heaven, our universe and how our experiences within our reality are important. In our reality, everything is possible. It really is.



The True Nature of the Universe

This is a discussion on the true nature of the universe and how individual realities fit within its' scope. I consider this an important writing and it acts as a "bridge" between the various "schools of thought" on the nature of our universe. What is presented is for your consideration.



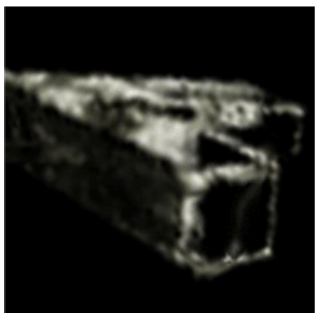
Why our Understanding of Reality is False

Here we discuss four paradoxes of the second law of thermodynamics and use this as a springboard to illustrate that it is impossible to understand our reality within the MWI using Newtonian limitations placed on us through observation.



Evolution of the first sentient life on Earth.

Humans are not the first intelligent life on earth. There were many others. Here we discuss one of the first species of intelligent life; the Cephalopods. They have existed for hundreds of millions of years, and now exist as octopi that inhabit the oceans around us. Let's talk about them.



Transport of an Extraterrestrial Modular Structure

In 2012 through 2014, a huge armada of skyscraper-sized modular components was tracked inbound to our solar system from deep space. They decelerated and landed on the moon. This is the story of how MAJestic scrambled to find out what was going on at this time.



The Frightening Possibility of Genetic Social Stratification

The primary mission requirements that I was involved in lay in assisting our benefactors in human sentience determination. The human race is moving towards a day of evolution and key to that point in time is the chosen sentience we select. It has frightening consequences.



The most common extraterrestrial species that interacts with Americans.

Here we discuss the grey extraterrestrial alien species.

Contrary to the public narrative, there are numerous extraterrestrial species that regularly visit the Earth. In fact, they have all been doing so for many, many years.



The Mystery of the Dellschau Flying Contraptions

Here we discuss the mystery of a secret organization wholly devoted to enabling humans to fly. This organization was active years before the Wright brothers ever contemplated manned air flight. The members eventually died off, and all that remains are the records of their adventures.

MAJestic Related Posts – World-- Line Travel

These posts are related to “reality slides”. Other more common terms are “world-line travel”, or the MWI. What people fail to grasp is that when a person has the ability to slide into a different reality (pass into a different world-line), they are able to “touch” Heaven to some extent. Here are posts that cover this topic.



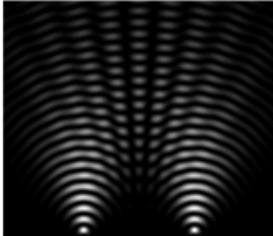
Some True Stories of Cat Heaven

Being in MAJestic taught me many things. One of which was an intimate understanding of Heaven and other “spiritual” things relative to quanta entanglements. Here I discuss what it is like to have a beloved animal (cat) dies and what actually happens to them and why.



Consciousness Migration for World-Line Travel

This post discusses how Heaven was formed, and what reality actually is. It discusses how world-lines function and just what MWI (Many Worlds Interpretation) is. This little post is the foundation of all aspects of my particular involvement with MAJestic. As such, it is important reading material.



What I miss from my original world-line

This is a little micro-post of some of the things that I miss from my time “before” I got involved with MAJestic and all that MWI “stuff”. It really makes no sense to anyone in this reality, but to me, it’s pretty important stuff. It’s simply a compilation of some of the quirks of this reality that are different to me.



Graphic on how world-line travel is possible

Many people are intrigued about world-line travel. They argue that the MWI is too difficult to understand, but thanks to Hollywood, the imagined adventures in alternative world-lines are quite appealing. Here we set forth how the MWI works and how it can be leveraged for world-line travel.



An Observed World-Line Switch - The Aluminum Foil Lady

Here is a report of a person entering this “world-line”. She appears on a busy road and is filmed by an automobile dash cam in the process. She is wearing a protective thermal “space blanket” material coat, and is apparently dressed like a nun. We discuss her and the utility of roads in this context.



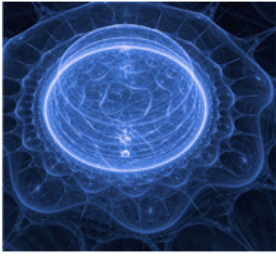
World-Line Travel Using Vehicles - Some Examples

There is ample evidence that people are entering and leaving our reality using various methods and techniques. One of which consists of vehicles with heavy devices that enable world-line cross-over events. Here we discuss these events and look at numerous examples.



A World-Line where the Beatles Never Broke Up

Here is a story about a man who ended up getting hurt and was rescued by someone from an alternative world-line. He tell his story and brings back a Beatles mix tape as proof. We discuss his adventure relative to MWI slides and look at commonality of descriptions.



World-Line Creation and Stability Considerations

Let's talk a little bit about what a world-line is, how it is accessed, and why it sometimes needs to be accessed. This isn't full of all kinds of stories about visiting different world-lines, but rather why certain advanced species use the MWI to control the sentience evolution of humans.

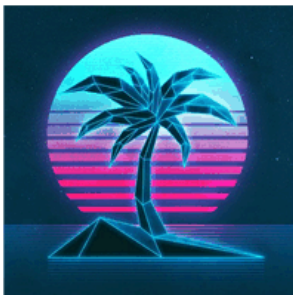


ProfessorPhate as an Example of MWI Crossover

In 1999 an individual going by the name "Professorphate" produced a narrative claiming that he was from another world-line. In his narrative he talked about this other world-line and the circumstances that brought him to our apparent reality. Presented for curiosity only.



The "Passage of Time" is actually Observed MWI World-line Slides. Here we discuss what time actually is, and the differences between a dimensional egress portal and a MWI slide. We also use examples, two to be exact, where people have entered and left our reality using a 7th dimensional transport. We discuss how this works and why.



What is the Color of Chartreuse; is it Red or Green?

Many people who have lived through the 1980's, such as myself, clearly remember the color to be a deep red like color. However, our current reality describes this color as a yellow green. This confusion is known as a Alter-vús, and this post describes what is actually going on.



Mandela Effect - A System of Soul Management

Here we look at an interesting mystery that is occasionally observed. It is known as the Mandela effect. Essentially it is a situation whereas our memories do not match up with the reality. Here, we look at it in terms of MAJestic and the management and cultivation of soul growth.



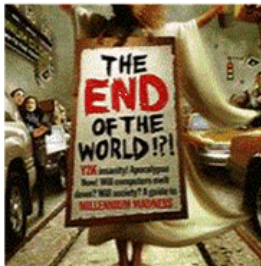
What the difference is between Soul and Consciousness

To understand how our reality exists and what Heaven is like you need to understand the basics of just what we are. Here is one such fundamental understanding. That is the difference between souls and consciousness. For while we think, reason and experience, it is our consciousness that does so for our soul.

John Titor Related Posts

Another person, collectively known by the identity of “John Titor” claimed to utilize world-line (MWI egress) travel to collect artifacts from the past. He is an interesting subject to discuss. Here we have multiple posts in this regard.

They are;



John Titor and World-Line Travel as Time-Travel (Part 1)

This is an introduction to John Titor and his claim that he utilized world-line travel to go into apparent past(s) to acquire equipment. He burst onto the internet in 1998 and left in 2001. He left a trail of mysteries in his wake. In review, knowing what we know today, his story rings true.



John Titor and World-Line Travel as Time-Travel (Part 2)

Here we look at the John Titor narrative that describes what happened in the United States that precipitated civil war, and World War II. We look at it from a point of view twenty years later, and to the surprise of many, he accurately predicted many things that we take for granted now.



John Titor and Details on his Time-Machine (Part 3)

Here we spend some time going into the disclosed details of how the Time Machine actually works. We look at the manual and come up with the conclusion that he actually was hiding something or some elements of the machine. Let's look at this issue.



John Titor and our Reactions to his Disclosure (Part 4)

Strange as it might seem, once the news of John Titor hit the internet, many people had all sorts of reactions to it. Here we review the reactions. They, in themselves, tell us a lot about ourselves, society and about the nature of the universe. Here we look at the reactions.



John Titor - Full Text of his Transcripts (Part 5)

For over a decade the actual transcripts of what John Titor said and his discussions on chat boards were obliterated. The only thing that you could find were websites that said he was a hoax. That all changed when enthusiasts collected and posted his writings. Here are the earliest transcripts.



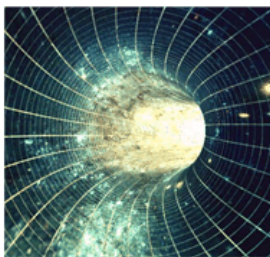
John Titor – Full Text of his Transcripts (Part 6)

There are all sorts of fragments of the John Titor discussions floating in bits and pieces throughout the Internet. This post collects some of the more obscure bits that did not make it into part 5 of the text. These tidbits are interesting but also irritating as the attacks on the narrative are relentless.



John Titor – Full Text of his Transcripts (Part 7)

This is the final discourse from John Titor to the rest of the folks on the BBS “Time Travel” board. He answers questions and responds to requests. He also clarifies things. Of course, the sniping and harping, as irritating as it is, continues unabated. It’s the final posting of this discussion.



John Titor – Full Text of his TTI Board Transcripts (Part 8)

Here is a secondary source for discussions involving John Titor. He subscribed to numerous time travel BBS forums, and this one; TTI is often overlooked. Here, we look at some of his statements on the board. His dialog on this board is very interesting and contains uncommon narratives.

Articles & Links

- You can start reading the articles by going [HERE](#).
- You can visit the Index Page [HERE](#) to explore by article subject.
- You can also ask the author some questions. You can go [HERE](#) to find out how to go about this.
- You can find out more about the author [HERE](#).
- If you have concerns or complaints, you can go [HERE](#).
- If you want to make a donation, you can go [HERE](#).

