

The Mystery of the Lapulapu Ridge

The mystery of the Lapulapu Ridge is a very interesting subject. Indeed, our world is filled with all kinds of interesting things going on. Some can even possibly be considered an extraterrestrial riddle. Even if it is wholly terrestrial in nature. All we need to do is take a good look at what surrounds us. Because, if we look at things with open eyes, and with an open mind, we will see new things, and come to new understandings on our world, and what is just going on within it.

With the advent of new technology, we are able to peer into regions and places that used to be denied us. Today, using such technologies as Google Earth, we are able to peer into the shroud and explore all kinds of things that we didn't even know existed. Some of it is amazing. Some of it is frightening. Some of what we see can be curious, while others can tell us just a little bit more about ourselves. All we need do is listen to what we find.

Today I would like to discuss a very odd thing that is going on at the Lapulapu Ridge.

For those of you who don't know, the Lapulapu Ridge is an undersea formation that lies outside of Saipan. Saipan is a small group of islands in the Pacific Ocean. It is terribly isolated and remote. It's also part of the United States. (I'll bet that you all didn't know that.) The point of interest here is not the abundance of coconuts on the Saipan island, or the history of the island during World War II. What is so interesting about this place is that someone, or something, has been busily mining that area for some time. Most certainly for years, probably for decades, and maybe even for a century or longer! What is so odd about this is that it is impossible to do so. At least, using known conventional technologies, that we hu-

mans possess.

Let's have a look at this curious situation...

Introduction

"We still haven't explored the deep oceans or the inner crusts of Earth."

-Dr. Wolf statement in regards to the extraterrestrial presence on the earth and their activities.

Let's take a moment to look at what is going on in our planet. We humans like to believe that we are the "owners" of the planet, and that we are in full control and knowledge of "our" planet. We like to believe that we are at the top of the food chain. We like to believe that we are in full control of technology and have the power and dominion over this planet.

That is wrong. We have no power, we know very little, and we know "jack shit" about the history of this planet. In fact, we actually know very little of the planets past and whom actually "owns" the planet that we reside upon. Yet the evidence of the real "owners" of the planet are everywhere, we need just search for the evidence and study it with an open mind.

I would like to take a look at some such "object" or area of evidence. It can be considered a terrestrial or even an extraterrestrial mystery. I

would like to look at the Lapulapu Ridge Mining efforts near and around Saipan. I refer to it as a “mining” effort only because the tracks suggest displacement of soil. The only reason for the displacement of soil that I am aware of is part of either mining or construction efforts. (Constructions that are suggestive of long linear lines are more akin to roads than they are for buildings.)

Therefore, let’s look at what is hidden deep under the ocean under the waves. Let’s look at evidence of large-scale (possibly) robotic automated mining operations under the surface of “our” oceans.

The Lapulapu Ridge Formations

The following are filtered images from Google Earth.

The filters remove the reflective waveform obfuscation layer characteristics of the oceans from the Google images. I want to give Google the benefit of doubt and attribute the reflective quality of the ocean surface to be a truly natural obfuscation.

However, once the images are filtered to remove this sort of waveform obfuscation layer a series of patterns emerge. This is truly puzzling, as one would expect to see resolved undersea details. You would expect natural features to parallel that of the native landmasses. Such things as mountains, rivers and other natural geologic structures would be expected to be shown, or more accurately, their undersea equivalents. But instead, one can clearly see enormous scaled undersea (apparent) surface mining evidence. Once removed, one can clearly see the presence of unusual tracks

and movement.

There is absolutely no way that this can be considered to be natural geologic evidence at all.



The Mystery of the Lapulapu Ridge is one of a city-sized mining operation under the ocean. A 388 mile long underwater site showing extensive geologic mining activity by large (huge) vehicles on the Lapulapu ridge near the Saipan islands.

Undersea mining operations NE of Saipan. (Image Source.)

These features shown are near the Saipan islands. Of which the specific co-

ordinates are 16°27'31.55"N 147°14'19.51"E. I provide just a mere handful of images to illustrate my point here. The reader is encouraged to pursue their own investigative activity to whatever conclusion it leads to.

These are NOT natural geologic formations. Nature does not follow straight lines unless they go through fissures or regions of internal stress. Nor do they make 90° bends, and 180° bends. Nor do they repeatedly follow parallel paths of operation. There is absolutely no way that these features are natural.

Non-Natural Features

I was never briefed on these features, nor was I introduced to them through any kind of program or manual. These constructions were discovered as a natural bout of investigative journalism. Indeed, it is characteristic of obtaining supportive documentation for my own contentions. All that one needs to do is look around themselves to the world about us. In so doing, one can see the hidden secrets that lie submerged and hidden.

I do not know who or what formed these features.

They might, remotely, be naturally made. They could be constructed by some surreptitious government project of great secrecy and complexity. They could be all that remains of some great underwater public works project. I don't know at all. But to me, these structures are clearly intelligent driven. They seem to suggest large-scale underwater mining efforts. That is the basis of my discussion here. That these apparent features are but part of large-scale construction made by a race with the capability to do

so.

These features are not limited to the Saipan region, but exist in other undersea locations. For instance, they can be found at $47^{\circ}47'46.16''\text{S}$ $107^{\circ}15'00.93''\text{E}$ as well. Of course, the form and shape is different. But whom would expect large scale mining west of southern Tasmania?

If human, then we really need to take a good hard look at what our fabrication abilities are. Because if we can mine or perform these kinds of undersea activities, then we can most certainly create a facility on another planet. If these formations are not human, then we need to reconsider who is making them and why. Remember, boys and girls, extraterrestrial activity, of huge extent, can be found throughout our solar system. We only need look below the surface and take a hard look at what is presented to us.

Statists say these features are just normal

After the initial discovery by a poorly named group known as "SecureTeam10", the scientific statists came out with their pronouncements and statements.

"Large parallel lines = tectonic fissures, naturally occurring sorry. The curvy line is likely the pathway of a underwater current and deposition field of said current."

- YouTube Mikitan Fox

Now of course, the Scientific Statists have to crawl out from under a rock and “explain” to us that all of this is of no concern. They hurriedly hopped up upon their great white horses and began to beat the drums loudly. They shout, *“This is just an ordinary fault line. Anything else is incorrect. Everything else is nonsense.”*

My definition of scientific statism;

A concentration of a set scientific theory in the hands of a closed elite group of people. Often they have direct ties to a highly centralized government. To alter or change that theory to revise it to meet new discoveries or data often requires government derived politics and peer-group approvals.

Tectonic Fissures

Well, it’s just like those pesky statist to make a pronouncement and run away to hide in their mother’s basement.

The fracture mechanics model of the tectonic fissures do not permit the kinds of fractures and behaviors that are clearly observed in this instance. I suggest anyone interested in the formation of faults and their behaviors read *“Formation and Development of Fissures at the East Pacific Rise: Implications for Faulting and Magmatism at Mid-Ocean Ridges”*. It can be read on line at [Department of Geosciences, Oregon State University, Corvallis, OR 97331 USA.](#)

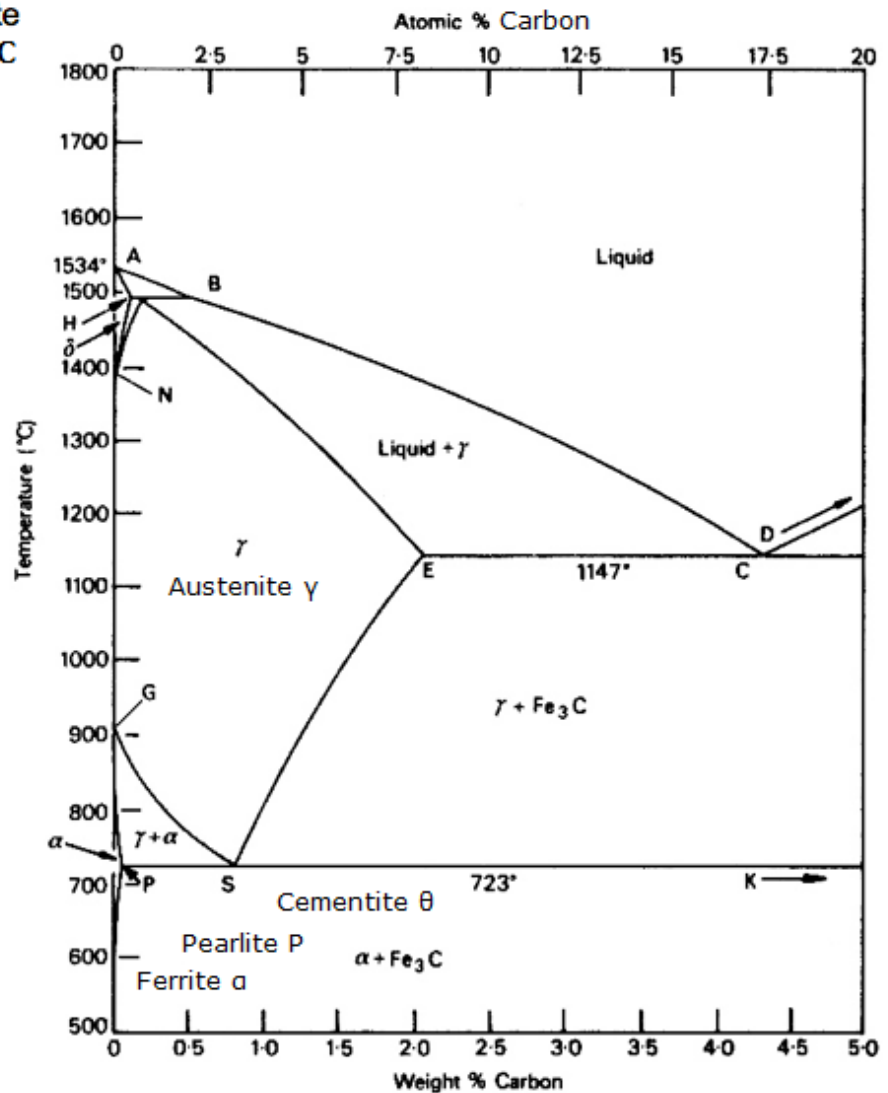
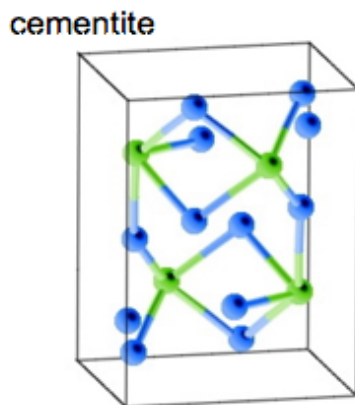
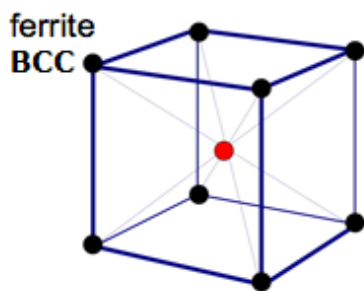
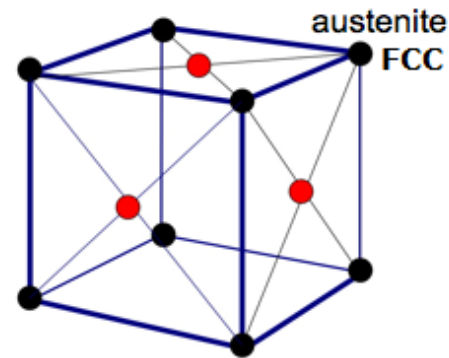
By understanding the fracture mechanics involved in geothermal processes (especially those in the Pacific rim) one can clearly see that these “tracks” are absolutely not tectonic fissures. Tectonic fissures? What a laugh! Compare these images with the fault lines found in California here.

From the paper;

"The Griffith theory assumes that crack initiation occurs from the points of highest tensile stress on the surfaces of these microscopic flaws or "Griffith's cracks" in brittle material (in a biaxial stress field), and this has since been elucidated by the theoretical and laboratory studies of Bieniawski [1967] and Huang et al. [1993]. Joints, lava flow contacts, and tension cracks may be regarded as the macroscopic analogy to "Griffith's cracks" [Gudmundsson and Bäckström, 1991]."

Our understanding of crack formulation in brittle and ductile materials is quite mature. In fact it is one of the most common mechanical and civil engineering undergraduate courses that engineering students take. Oh, I surely remember the days during my classes in the "*Mechanics of Deformable Bodies*" class. LOL. In the case of the formation of cracks in the Pacific rim, it is obvious that the formation is absolutely straight forward for compressive fissure formulation.

Now, stress lines and their associated fractures for geologic features in the Pacific Rim are influenced by the elastic moduli, tensile stress and tensile strength of the host rock. As such, we know that hosted stresses, are in turn, a function of the grain structure of the materials.

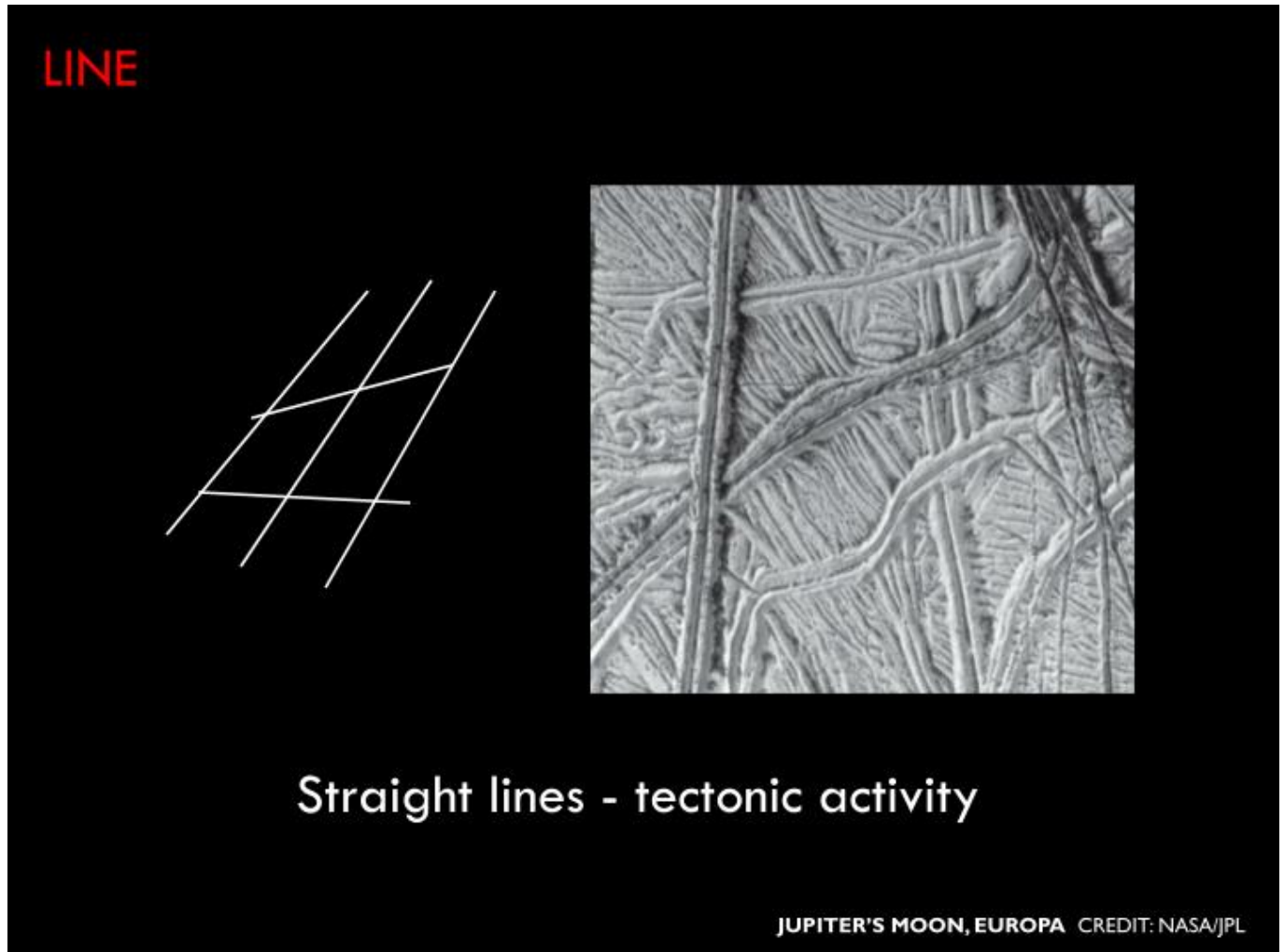


Lattice structures on steel showing the relationship of the various phases of state as a function of impurity composition / percentage for alloyed iron.

I well remember the days as a young engineering student. We studied the material properties of various materials and how the grain and lattice structures influenced the lines of stress inherent in them. One day we went to the lab and we observed the clean and cut fractures of sample steels.

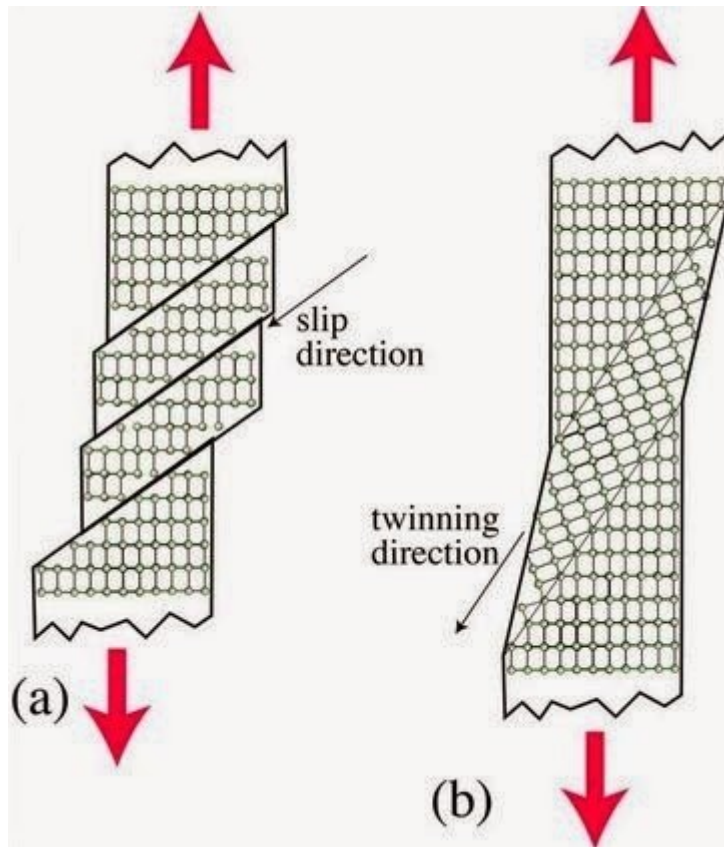
The professor took numerous samples of SAE 1045 and SAE 1018 and placed them in a machine that pulled them apart. The deformation of the parts were at a nice clean 45 degree angle. This was quite along the lines of the crystal grain structure of the materials themselves. No matter what material, and no matter how fast or how slow, the fracture was always identical. It ALWAYS followed the lines of stress inherent inside the material.

We can see this everywhere. We can see this on the earth, and we can see this on other planets such as the moons of Jupiter. Here is a NASA slide showing the tectonic stress lines on Europa.



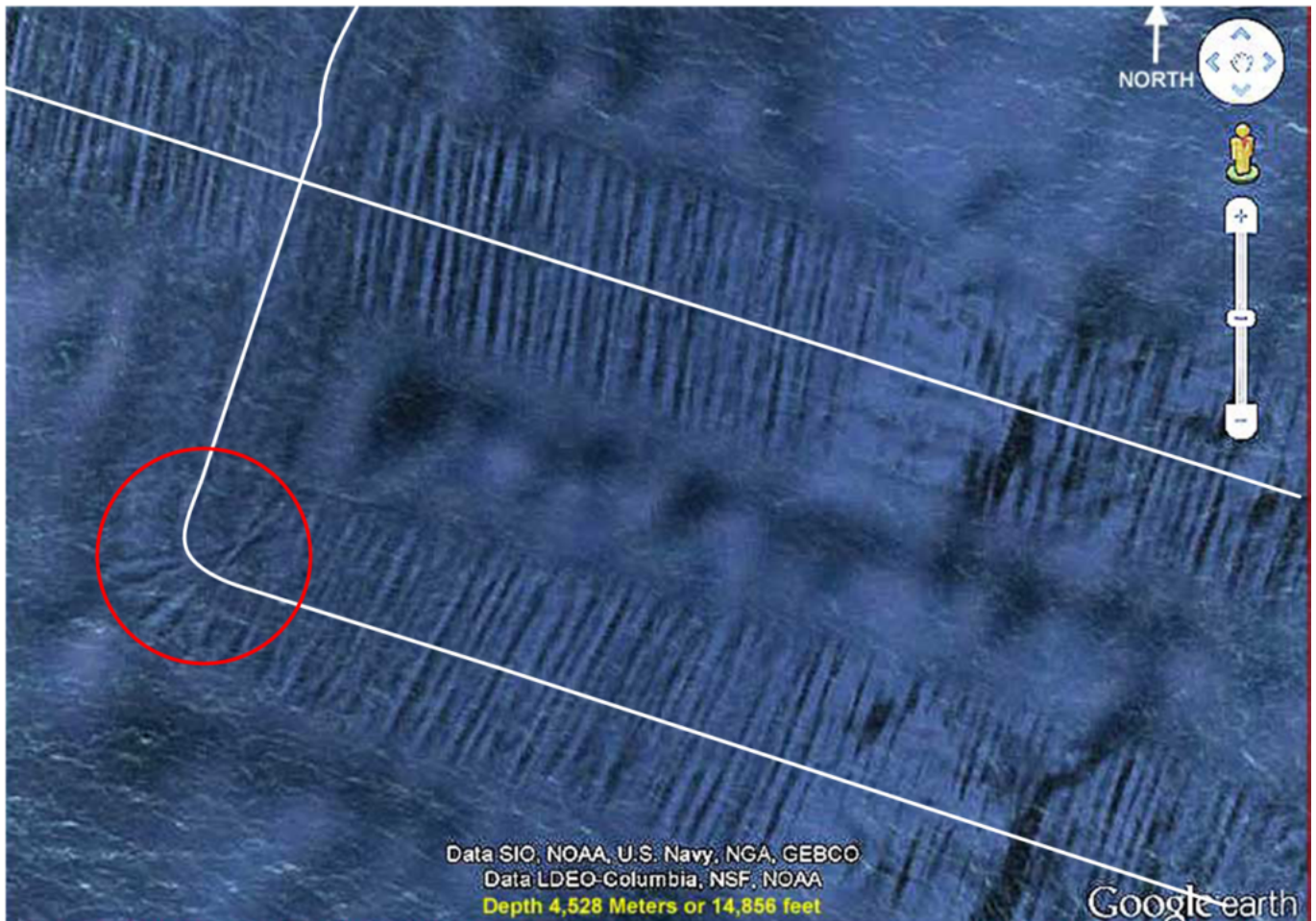
Tectonic activity on Europa, one of the moons of Jupiter. Notice how the lines match the lattice formation of the grains of the material that is under stress.

Fractures form along the principle lines of stress inherent in the material grain composition of the materials that make up the undersea mountain ranges of the Pacific Rim. This, in turn, is a function of the grain structure of the surrounding rocks. Thus the reason for straight lines, and precise angles of exact (and repeatable) angular measurement.



When a material undergoes stress, especially tensile stress, the fracture is along a line of least resistance; or stress line. This line follows the grain pattern of the material. This is also known as the direction of slip, or slip direction. Prior to fracture, there is a period when the base rock goes through a period of plastic behavior. During this time the twinning direction also follows the slip direction as a function of crystal structure.

However, while many of the track lines observed in and around the undersea formation known as the Lapulapu ridge are straight, they do NOT follow material stress lines. Just having straight lines, and angular fractures alone does not qualify an observation to be that of a tectonic stress line. As NOWHERE in the world do tectonic lines of stress manifest as 90 degree bends, followed by another 90 degree bend. No do they manifest as pure radii that rounds a straight 90 degree bend at tangential points. These are clear VIOLATIONS of the laws of deformable bodies.



Tectonic plates follow the lines of stress. They do not make nice round circular features that follow an inner radius to correct to a 90 degree bend. That is something a tractor trailer rig does, not what a stress line does. Note also the displacement of material during the bend; it overlaps previous material. In fact, through a study of the overlap we can easily see that the object make a turn left to displace previous material as opposed to a turn right.

Ha, that pretty much rules out the kinds of behaviors observed in these tracks now doesn't it?

About the Environment

These features and the corresponding events are taking place at a mind-boggling depth. At that depth the water is pitch black and the pressure is devastating. At the depth of 11,300 feet the water pressure would be a crushing 5000 psi.

To put this into perspective, most unclassified information place "safe" submarine depths at under 800 feet. We do know that submarines can dive deeper. However there is a difference between maximum dive depth and crush depth. World War II German U-boats generally had collapse depths in the range of 200 to 280 meters (660 to 920 feet). While modern nuclear attack submarines like the American Seawolf class are estimated to have a test depth of 490 m (1,600 ft.), which would imply a collapse depth of 730 m (2,400 ft.).

The depth of these tracks are at twice that depth.

It is as if it was on the surface of another planet. For instance, the crushing atmosphere of Venus is at 93 bar or around 1350 psi. Good golly, this is four times that!



German U-Boat washed ashore and amusing those enjoying the beach.

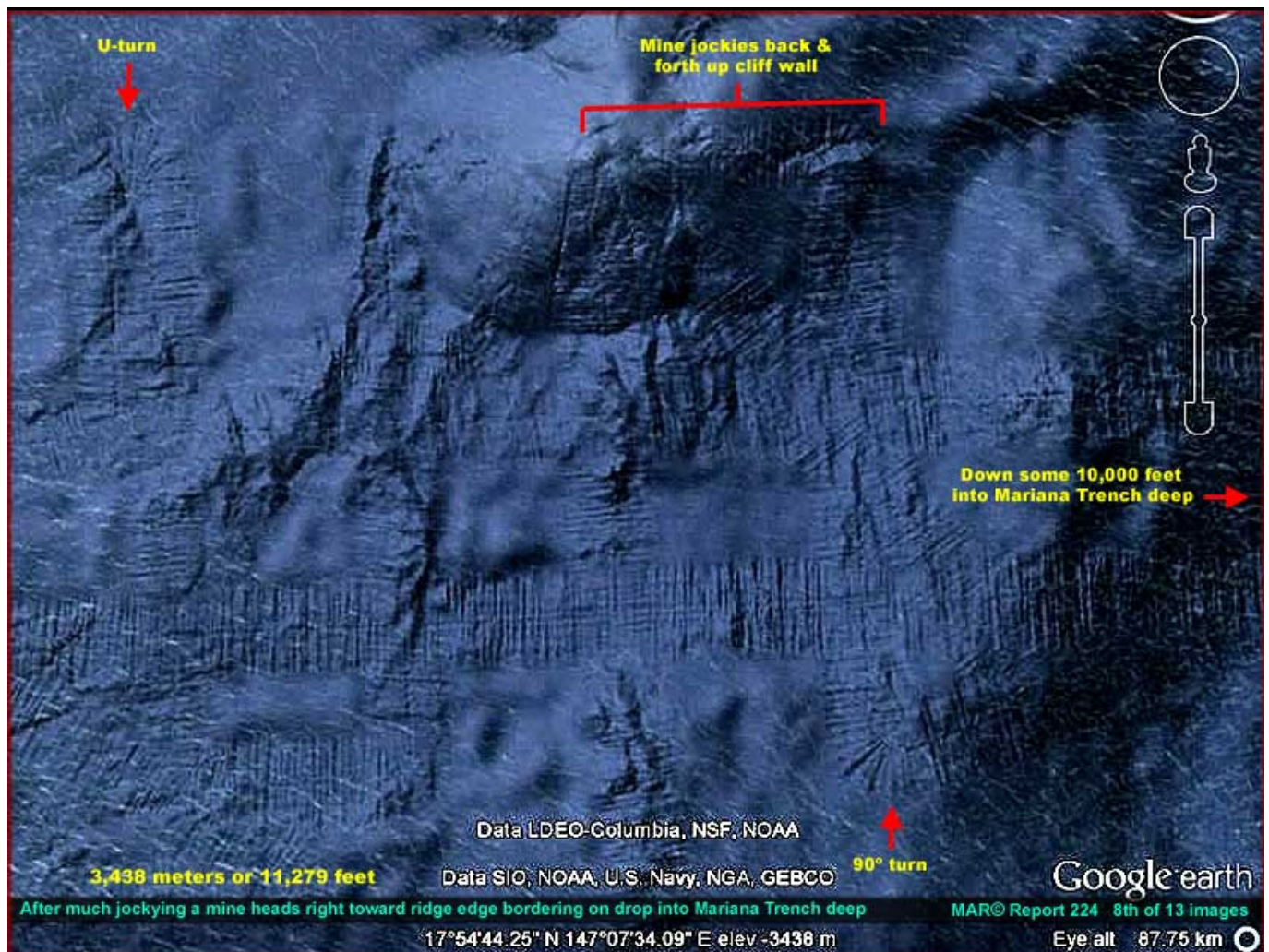
Anyone or anything that can manufacture such a structure and place it where it is, can do so in just about any rocky planet in our solar system. (Of course, gas giants are another animal all together, so let's not consider them.) The technology to make such a device is far advanced, and beyond anything that we humans can construct.

Track Behaviors

One of the first things that you can note from these images is the paths or trails that are constructed. The tracks go up entire sides of undersea mountains.. When the mountain is steep, the device that creates these tracks continues to try to go upwards, even if the vehicle slides down the hill sideways. It tries to jockey up the side.

The trails indicate complete U-turns that make a 180-degree turn, and then follows alongside the initial path or track.

The trails indicate intelligent decision. Ninety-degree turns are made, seemingly at random points. Obviously there was some sort of decision tree and direction that was provided to the engine that creates these tracks.



Mining evidence of the mining of the Lapulapu undersea ridge near the Saipan islands. Here one can clearly see the movement of the object creating these tracks had trouble going up and down steep underwater cliff faces. The device or vehicle that made the tracks had to jockey back and forth .

Southern end of the Saipan evidence site.(Image Source.)

Track Characteristics

The tracks are all the same. Aside from areas where they seem to go through mountains, the tracks are a uniform width. They create a line of debris that runs perpendicular to the track direction, and that line of debris is uniform with other lines with it. In the center of the track are a set of "inner tracks" that follow the main track line.

Goes Through Mountains

Apparently it, whatever it is, has the ability to go through mountains. This is very interesting.

Does it actually go through the mountain, or does it dematerialize before it, and rematerialize after it? It seems that it actually went through the mountain and the tunnel has since collapsed leaving a shallows and separation of one island into two.

Note that the tracks are also different. The tracks start to narrow down like an arrow. This is suggestive of a process that is unknown to us.



A study of the tracks and the paths lead some interesting findings. For instance the tracks as they relate to the Saipan and Tinian islands is very interesting. It suggests that perhaps the engine went under the island, created a kind of tunnel, that eventually collapsed. Thus forming a shallow area and two separate islands instead of one large island.

Going through mountains and islands. (Image [Source](#).)

Intelligent Control

It is obvious that there is some degree of intelligent control over the ve-

hicle or thing that creates these tracks. It makes 45-degree turns, 90-degree turns, and 180 degree U-turns. It is as if it is searching for something.



Closeup of the southern evidence of tacks on the Lapulapu ridge near the Saipan island chain. The tracks make 45 degree turns, 180 degree turns and 120 degree turns. These are not natural processes.

Intelligent Control over the undersea vehicle. (Image [Source](#).)

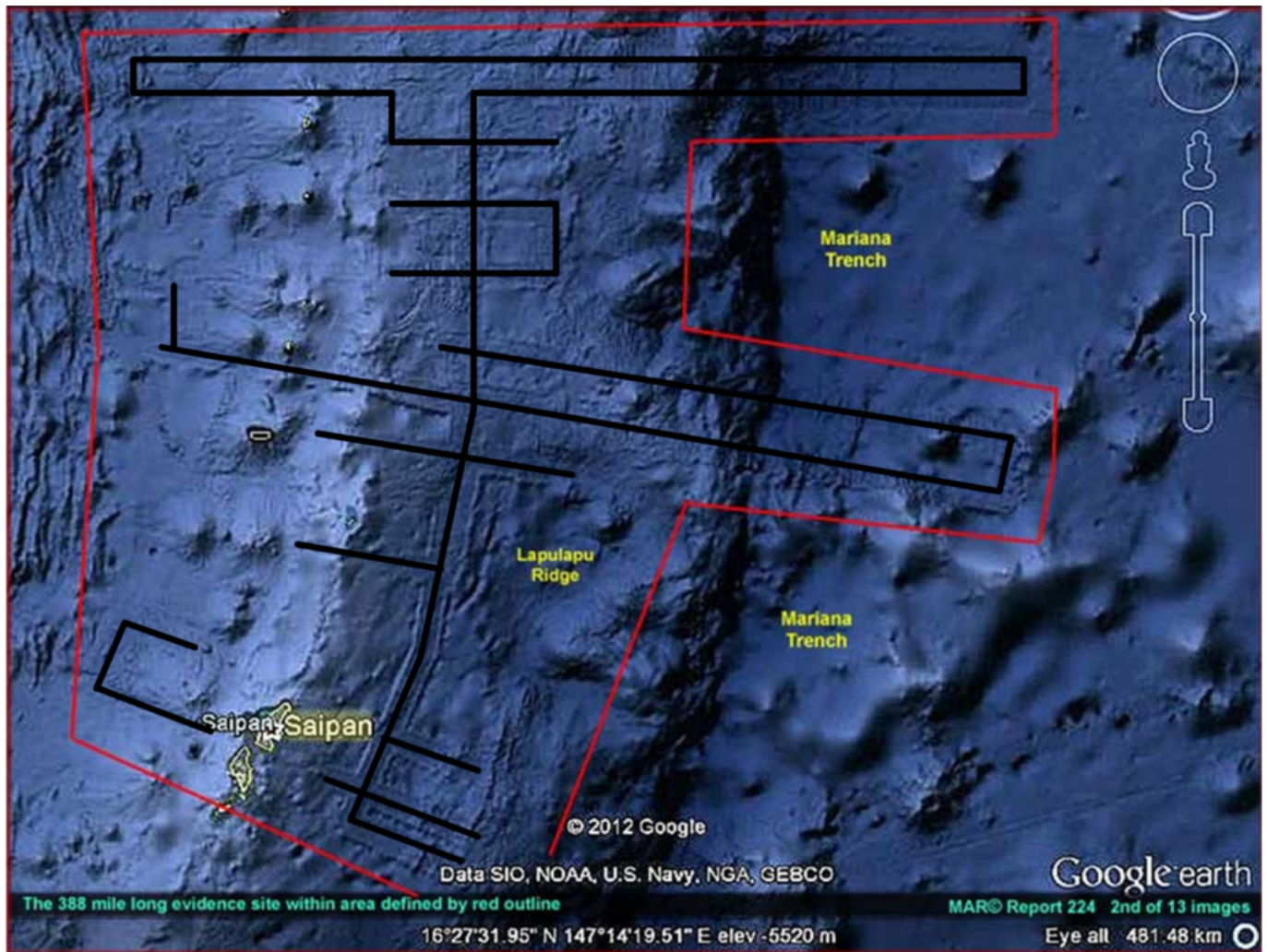


Tracks show clear evidence of turns and reversals, as well as search efforts that comprise 90 degree bends and turns.

Evidence of exact 90° turns. (Image Source.)

Large Scale Formations and Paths

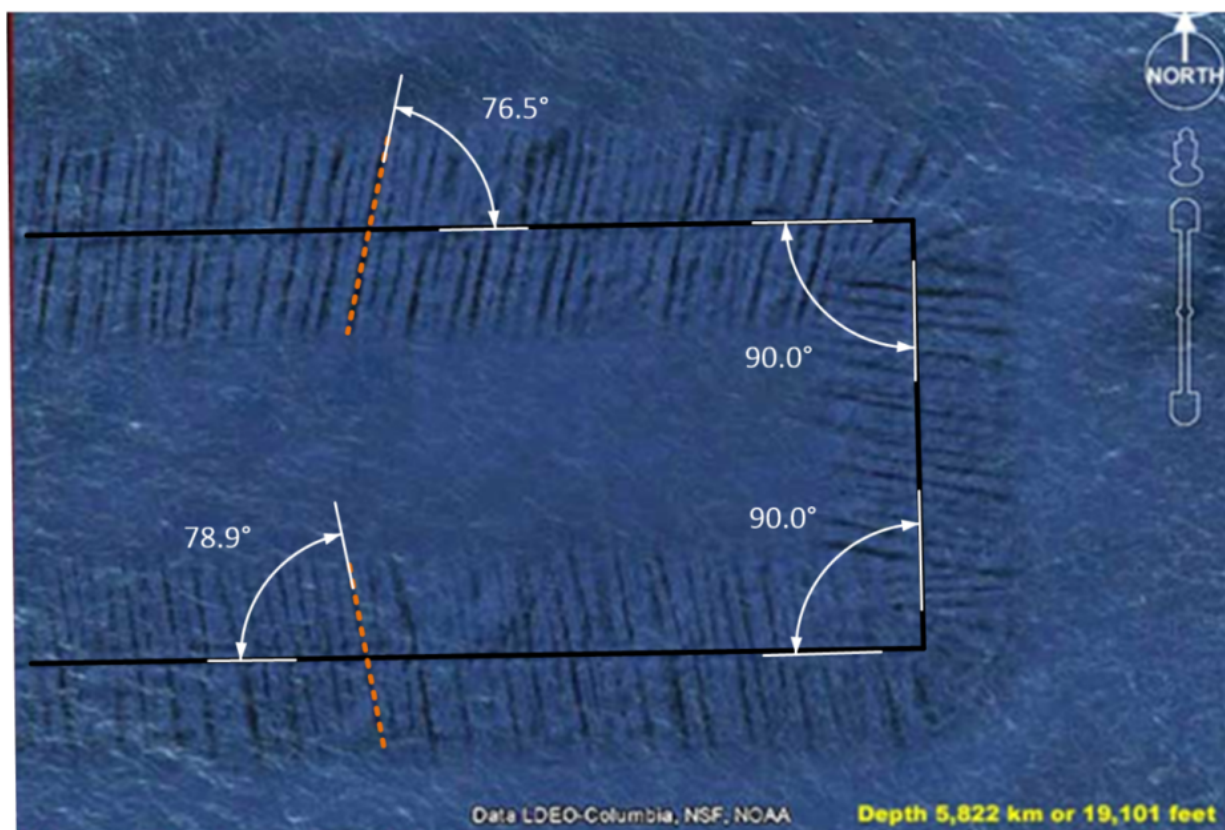
The device operates over enormous regions. Here is the overall general appearance of the most visible tracks around Saipan.



The tracks involved in the mining of the Lapulapu ridge show a pattern of obvious mining efforts. In fact, they almost look a map of the type of tunnels that one would make in an underground mining operation.

Obvious mining of the Lapulapu Ridge around Saipan.

Whoever or whatever is mining this area, they most certainly are focusing on the Lapulapu Ridge. The tracks clearly indicate an interest on the top of the ridge. While there are forays off the ridge, the tracks indicate an abrupt series of ninety-degree bends to return back to the ridge. I wonder what is so valuable on the ridge that requires such extensive mining at such a deep depth.

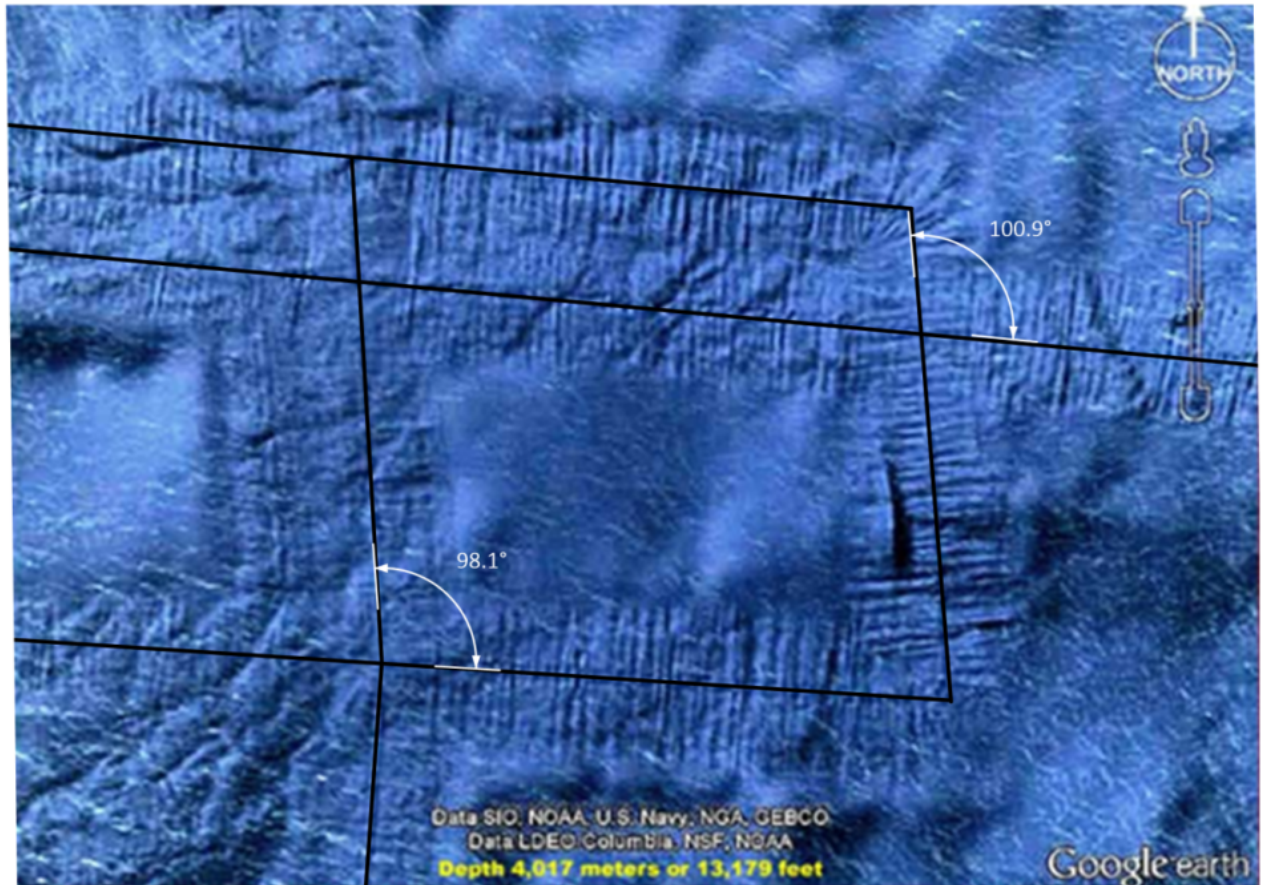


A study of the angular relationships of the tracks and the associated features of the tracks.

The angles associated with the large undersea tracks along the Lapulapu Ridge near the Saipan islands. They are certainly curious Large-scale formations. With accurate and exact 90 degree bends. The spent debris mounds are formed at a curious angle. The angles are similar but differ. The image above indicates a 76-degree and a 79-degree debris mound.

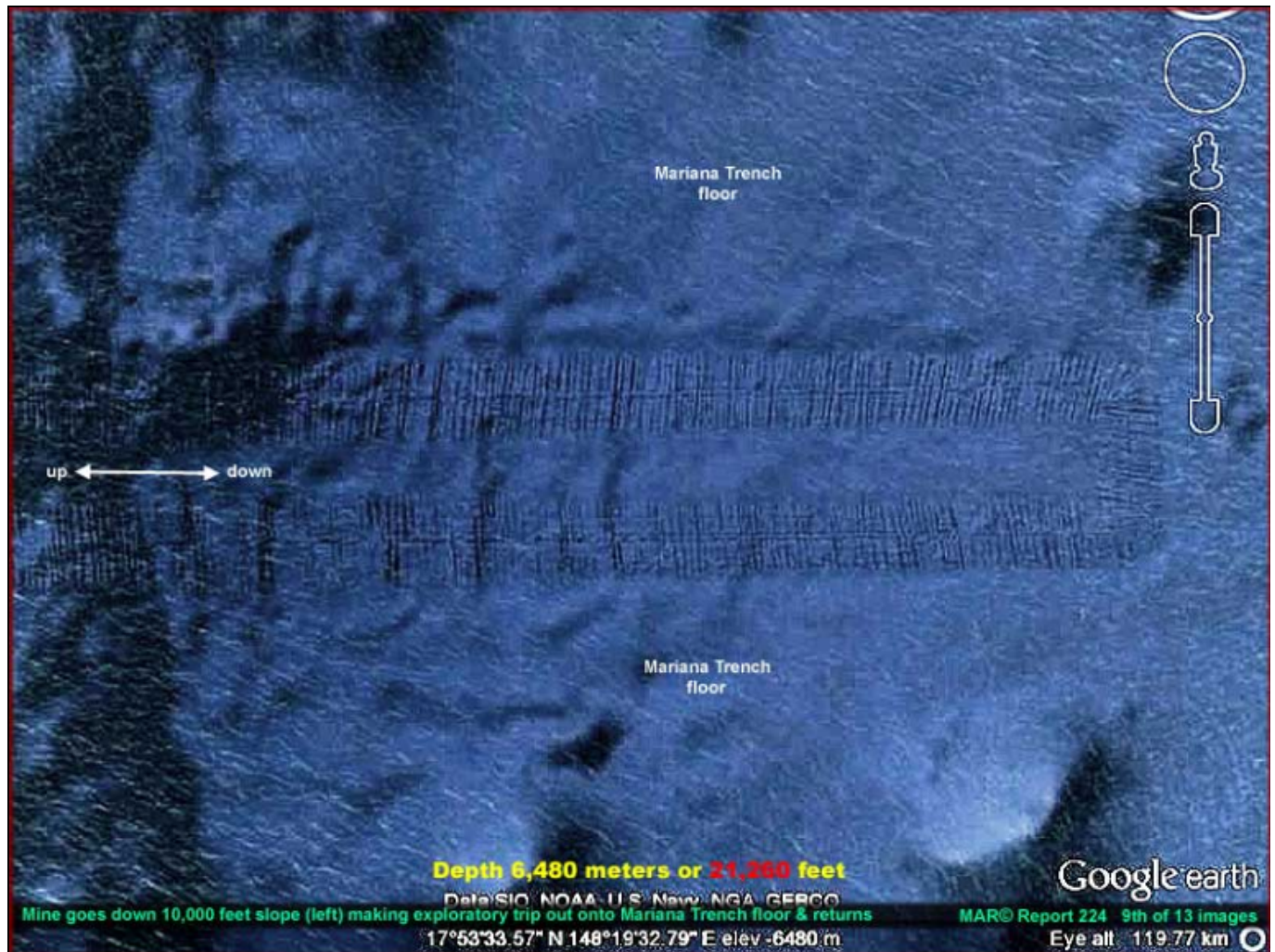
Evidence of Mining in a Grid-Like Formation

There is evidence that seems to point to the idea that the device operates following a grid or similar map.



Undersea mining operation near the Saipan islands showing rectangular exploratory behaviors.

Rectangular features forming perfect squares. (Image Source.)



As the mining vehicle moved away from the Lapulapu ridge, it discovered fewer minerals of interest and thus was forced to make a 360 degree turn and followed a parallel path back toward the ridge.

Large scale, large distance, grid-like mining.(Image Source.)

Possible vehicle

It's pretty difficult to track down a vehicle actually making these tracks. However, if you are careful you can find one. I like to call it the roving orb under the ocean.

A large object has been observed crawling along the undersea surface at a depth of over 3000 feet off the California coast. Unlike the “official” explanation for the Lapulapu Ridge Mining operations, this movement is more “organic” and seemingly random. The object, which observers say looks man-made rather than natural, is estimated to measure more than 2.86 miles in diameter. It is a dome shaped structure (as it must be to sustain the enormous pressures on the ocean floor). It moves along the floor and displaces dirt and debris as it moves.

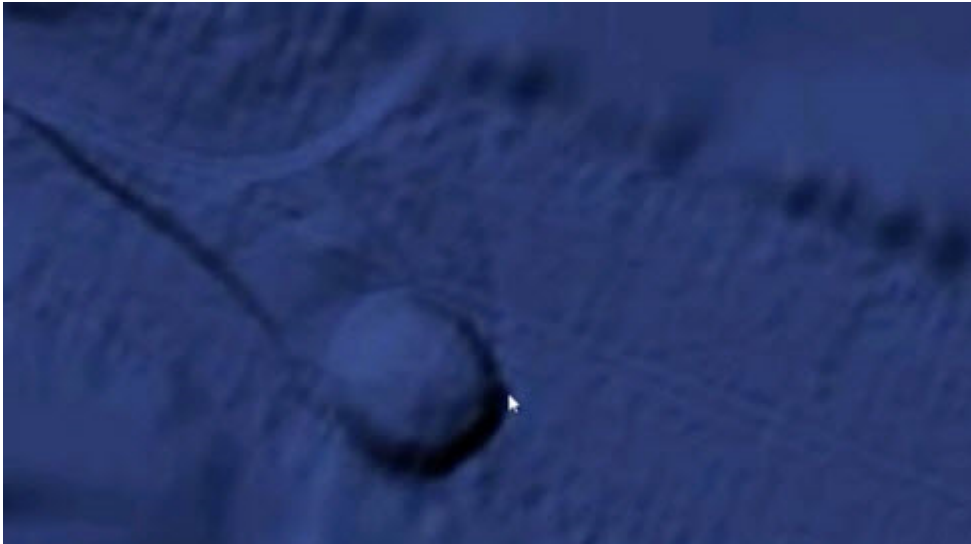
The object was brought to the attention of (UFO, strange event, and alien) investigators known as “SecureTeam10”. Tyler, who helps run the internet investigations site, said:

“There are certain areas of the ocean that are obviously blurred out. But what better place would there be for another race or another group of beings to hide than in the deep of our own oceans? ... While we are up staring at the sky all day and worrying about what’s up there we have 90 per cent of our oceans uncharted.”

-Tyler at SecureTeam10

Other comments include;

“We see a large circular object and an obvious path or trail created by it – and it disappears into a blurred out area – how convenient.”



Large undersea object that is ambulatory that seems to be associated with the undersea tracks.

What is this object?(Image [Source](#).)

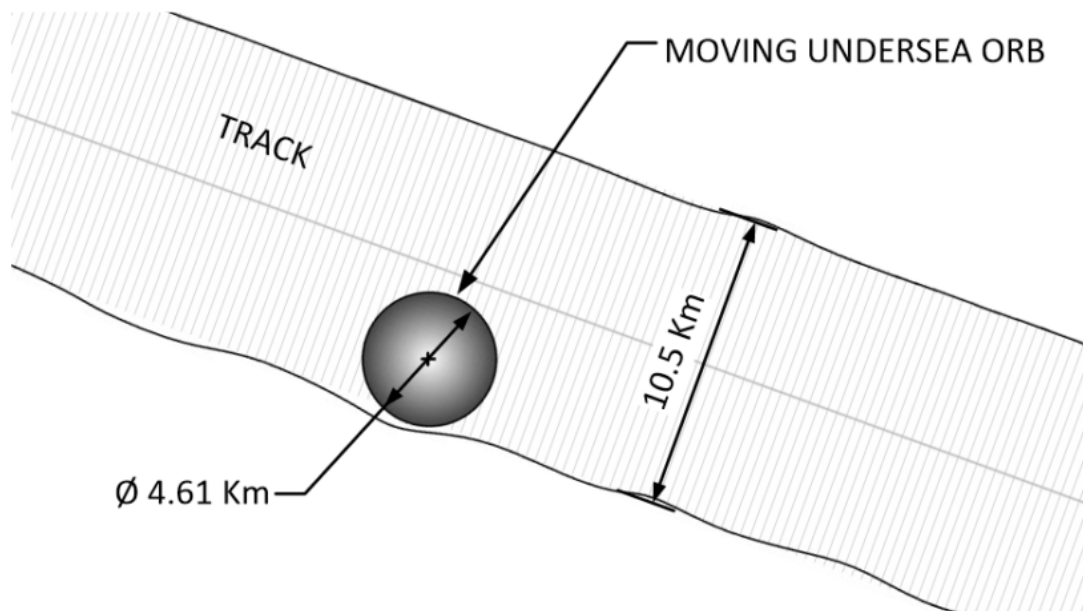
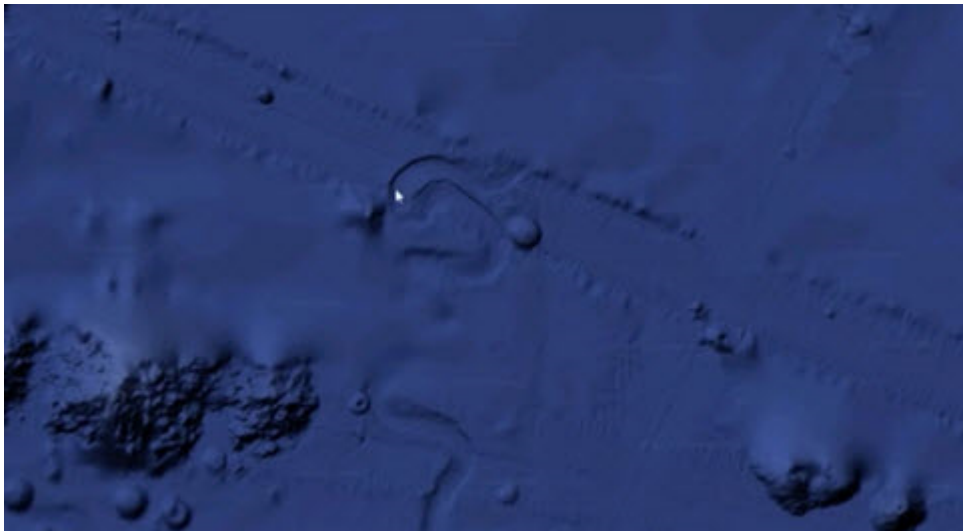


Diagram of the mysterious roving orb that tracks the mysterious mining tracks at enormous depths in the ocean.

It is pretty big. At 4.61 Km.

To put this into perspective, imagine that an American football field is 100 yards long (roughly 100 meters). You could fit 46 football fields end to end inside this object. It is huge. In fact, it is the size of a small city. It is around 66.5 square kilometers in surface area. It is one half the size of Pittsburgh, Pennsylvania. (151.1 square kilometers.)

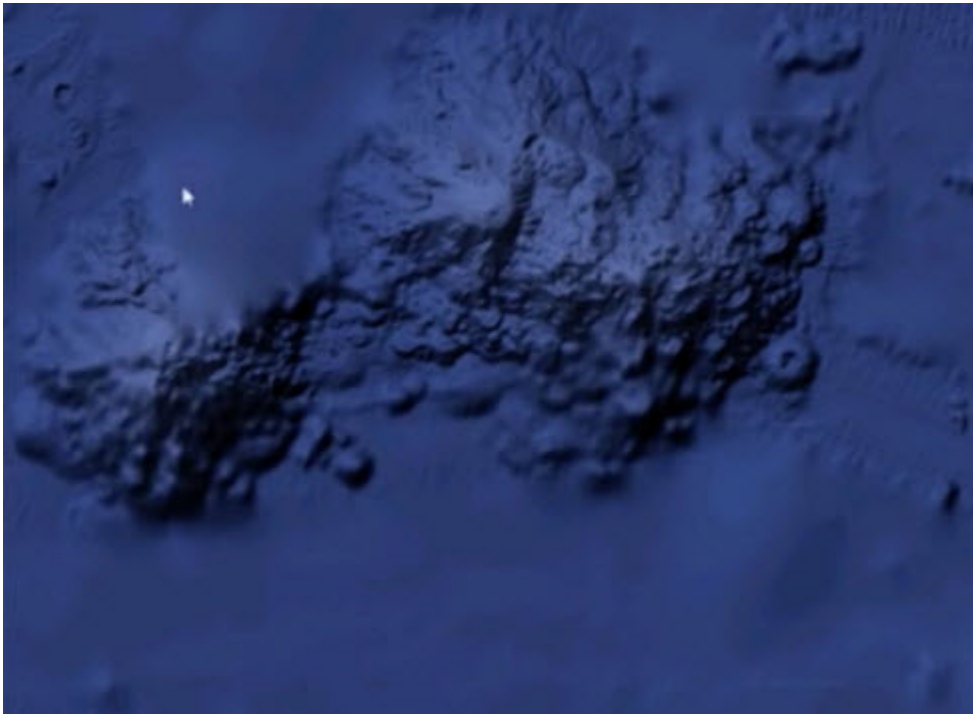
What we can learn from this orb is rather simple. It is associated with the linear tracks, but does not follow the tracks. It makes its own tracks, which seemingly appear to be of random movements. It is also smaller than the width of the linear tracks.



The mystery orb creates it's own tracks which differ from the more linear and wide tracks found alongside it. This movement is odd and apparently directionless.

There is no question that it is moving about and leaving tracks. (Image Source.)

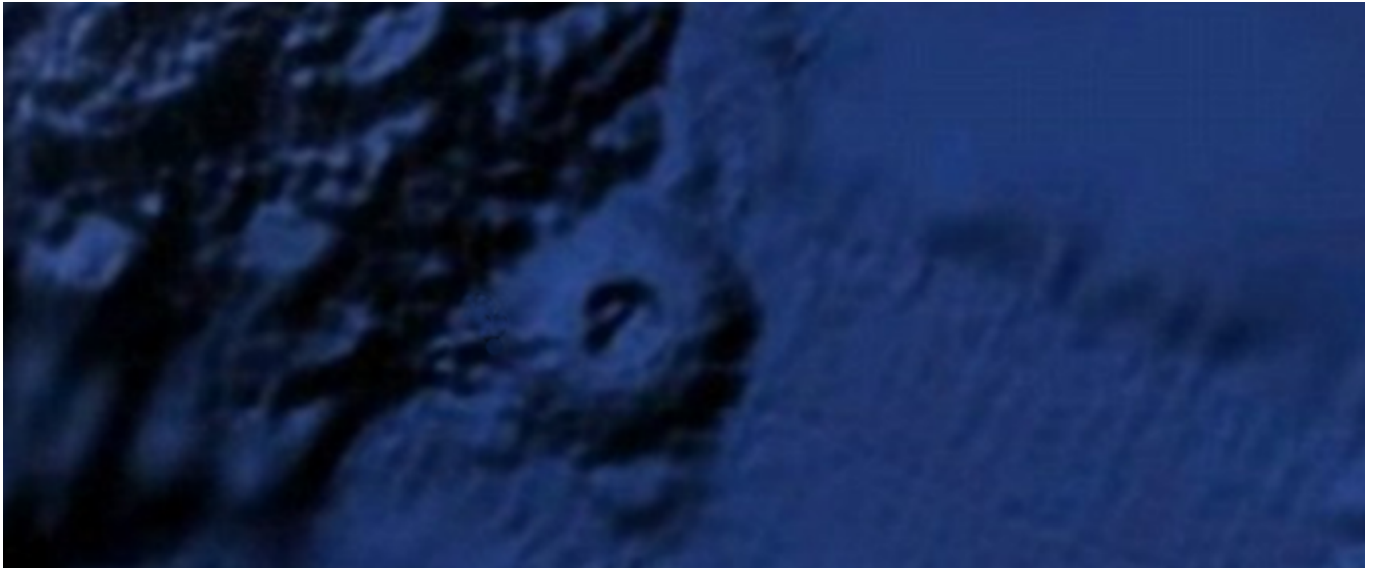
Abandoned Orb at the base of Lapulapu Ridge



An abandoned orb at the base of an undersea mountain near the Lapulapu ridge.

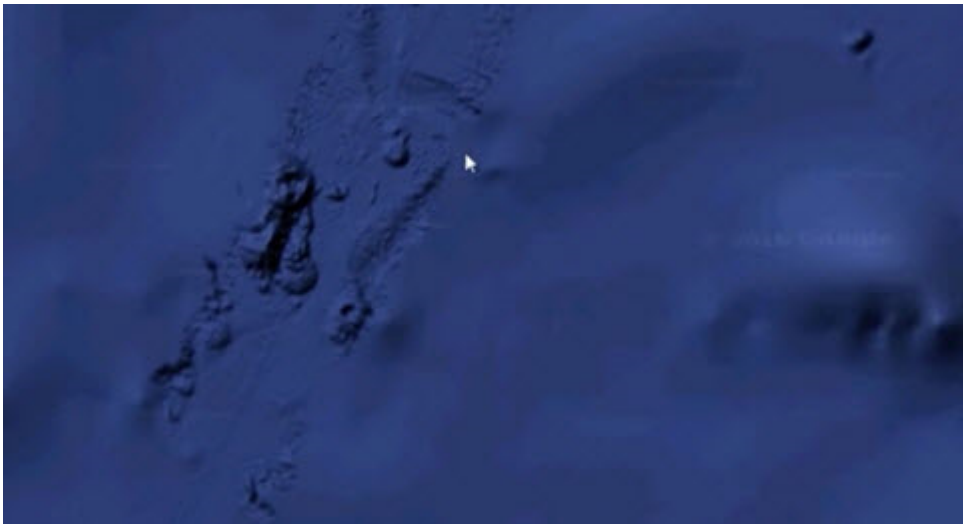
Another orb “parked” on one of the Lapulapu mining lines? This one looks like it is collapsed somehow. (*Image Source.*)

Close up of an abandoned orb that seems to be parked next to an undersea mountain. It looks like it has been there for a while. Notice that the top of the orb is open and suggests an interior with some type of complex layout. It is too bad that it is so deep, it would be really interesting to go and visit. I wonder what stories it could tell us.



The abandoned orb. The top appears to be open and there is something inside.

Uh oh. The Orb frustratingly disappears into an obscured area.



The orb disappears into deep darkness.

Curses! Foiled Again! (Image *Source*.)

Conclusions

There are features under the ocean that defy known geologic processes. They are suggestive of undersea mining by an enormous undersea orb. Attempts to describe this away as a natural process are laughable. I don't know what it is, nor do I know why it is there.

The only thing that I know is that the reality that we think of, is just an illusion.

It is entirely possible that this observed structure is something piloted by an intelligence for purposes that have no bearing or relationship to humans at all. As such, it is offered to the reader as nothing more, nor nothing less, than an intelligently piloted object that apparently defies the limits of human engineering.

Take Aways

What can we learn from this;

- There are mysteries that exist under the ocean.
- Not everything can be explained away as normal geologic processes.
- There are huge mobile constructions that can move about under intense water pressure.

- They create paths that appear to be searching or looking for something.

Other Opinions

I received this comment off-line by an influencer.

I think those “machines tracks” are an artifact of the SONAR scan, it’s called Phase Shadowing in the RADAR world. Check out Google Earth ocean bottom off the east coast of the US, say between NYC and Bermuda, it’s all over the place. I’d bet money it’s just an artifact of the signal processing but I’m only 95% sure.

I think that this is a valid observation. However...

- It wouldn’t explain the roving orb phenomenon.
- It wouldn’t explain why the sonar doesn’t influence the orb.
- It wouldn’t explain the jockeying back and forth on the sides of the undersea cliffs.
- It wouldn’t explain how some right angles are crisp, while others have a radius.
- It wouldn’t explain how the tracks go under the Saipan islands and then collapse them into the sea.
- It wouldn’t explain how dust and debris can obscure the tracks in certain areas.

This type of searching for answers is an important part of our role in un-

derstanding the world around us. While I have mentioned numerous “objections” to this solution, my ignorance in the way the sonar scan works should be obvious.

That being said, in my mind, it could very well be very possible that these are somehow associated with a sonar scan. I just do not know.

RFH

How about a Request For Help? I tire of busybodies and statisticians who poke fun at the ideas and theories of others. They offer no constructive dialog. Rather they just make fun, ridicule, and then scurry under a rock.

I use this forum as a way to disseminate some of the things that I learned though my thirty years of involvement in MAJestic. However, I am forbidden to posit my knowledge directly. I cannot tell the interested, the “secrets of the universe”. The best that I can do is share my opinions about things that interest me, and flavor it indirectly with my forbidden understandings.

To help put this in perspective, put yourself in my shoes...

Imagine that you are working at a company with a brutal NDR. You cannot divulge anything about what you are involved in for any reason.

Now, let's suppose that for thirty years you were involved in training unicorns to dance with bigfoot. To help with your training, the Lock

Ness Monster would gather "magical beans" that you would award the unicorns when they did a particularly impressive dance move; like the cha cha or a nice rendition of the samba.

Now, there is no way that you can talk about unicorns, bigfoot, or the Loch Ness Monster. But, the NDR doesn't cover "magic beans". So in the best interests of society, you might want to posit your thoughts about growing "magic beans" and how they might be of interest to imaginary creatures.

That is the situation that I find myself in.

So, if you, the reader, were so interested, I would welcome your thoughts on this matter. What do you think about the plausibility that the orb and the tracks are natural geologic events? What are your thoughts about the idea that the US Navy already studied the orb with the open top? What are your thoughts on the levels of technology that must be achieved to perform these kinds of operations? Please, you are welcome to contribute.

This is my callout, to you the reader, to assist all of us in solving these mysteries. After all, this is a far better use of the internet than for looking at Justin Bieber videos.

FAQ

Q: What is causing the lines or "tracks" under the sea?

A: I do not know. There are geologic processes that can create lines around stress faults, however these lines do not look like any that we know of. If they are part of a geologic process then it would be a new and interesting geologic process. One that deserves study and investigation. To me, as a layman, they appear to be tracks with nice linear debris trails. However, human technology has not advanced to the stage where we can mine at such

deep depths. We just do not have that ability. Thus we have ourselves a mystery that perplexes us.

Q: What is the orb?

A: No one knows, of if they do know, they are keeping it secret. It is a large, no huge, structure that is roving about on the ocean floor. It seemingly follow or retraces the linear tracks made earlier, but instead of following the path already made, it just seemingly moves randomly.

Q: What can we learn about this odd event?

A: Someone or something thinks that the Lapulapu Ridge holds some valuable items or minerals. They have devoted time (obviously), and effort (certainly) to mine these elements. It is unlikely that they are human, because known human technology cannot reach the working environment that the objects operate in.

Q: Why isn't someone investigating this?

A: What makes you think that no one is investigating this? Just because CNN, WaPo, Salon and the Huffington Puffington Post thinks that there is nothing here, doesn't mean that is actually the case. From a technical point of view, the suggestion of technologies that would enable us to mine the ocean deeps, as well as to provide military advantage for naval submarines is reason alone to investigate this mystery. Remember, boys and girls, real investigations are never publicized. They are kept secret and the work is collected and accomplished in silence.

MAJestic Related Posts – Training

These are posts and articles that revolve around how I was recruited for MAJestic and my training. Also discussed is the nature of secret programs. I really do not know why the organization was kept so secret. It really wasn't because of any kind of military concern, and the technologies were way too involved for any kind of information transfer. The only conclusion that I can come to is that we were obligated to maintain secrecy at the behalf of our extraterrestrial benefactors.



How to tell if someone is in MAJestic (Part One)

There are many fakers out there. I really do not know what their motivations are. Some might actually have some experience, I don't know. None of them seems to have any kind of background that even approaches the membership I know of. This is how you can sort out the truth from lies.



How to tell if someone is in MAJestic (Part Two)

In this second part, we go into details on how the United States safeguards secrets. We talk about the MJ-12 disclosure and a historical overview of MAJestic. We also discuss the various reasons and restrictions that MAJestic is operating from. It's an important read.



Top Secrets and Flying Pigs

Here I try to explain how the Special Access Program works, and described how the most secret elements of those programs are kept waived and unacknowledged. I discuss why, and use the example of a fictional "Flying Pigs Program". To understand MAJestic, you need to read this.



The “Sales Pitch” Used to Ask Naval Aviators to Give Up Everything for MAJestic

This is a narrative on how I was offered the role within MAJestic. I was in training to be a Naval Aviator when I was called upon by the base commander. He asked me, and another AOCS, to join. This is how he convinced me.



Feducial Training of ELF-Based MWI Access

This is a small post about the training that we needed to learn into to enter into a transport mechanism for MWI access. You cannot access and switch world-lines without being able to access and “center” the implanted probes. This discusses this procedure and training.



MAJestic Mandated ELF-probe Implantation

This post goes into detail on how the first two “kits” of probes were implanted into my head. All of this procedure took place on the Naval base at the ELF substation. At the time, only myself and the other member of my “cell” aside from the Commander took part in this procedure.



My Very First MWI Portal Egress

This is a narrative of my very first experience in world-line travel. It happened immediately after I gave up flying as a Naval Aviator and joined the MAJestic organization. After training on feducials, and implantation, I joined a group of others and left our world-line.



First Egress Destination - EBP Implantation & Entanglement

This is the narrative of what transpired when I entered the Fixed Dimensional portal. I went to an extraterrestrial medical facility where a EBP was installed within my body. I discuss what happened and my first encounter.



Post EBP Reconstruction -Return To The Navy Barracks

This is my narrative on how I exited the dimensional portal and returned back to the Naval base. I discuss what it was like meeting my fellow classmates and how I was instructed to leave the Navy and become a civilian. This is how it is done and what I experienced.



After Implantation – Lost as an Autonomous Vagabond

This is my story of what happened after I joined MAJestic, and left the US Navy. I was fully actuated, but not yet trained in using my abilities. As such, I was a “loose cannon”, and existed in a very confusing state of reality. I was the real life Jason Bourne.



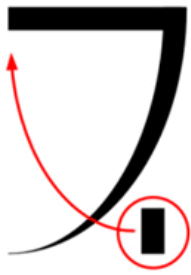
Rescue from the Wilderness – A Special Assignment

This particular post discusses how I found my way back to the Navy again, and began my “training”. I went into the desert to a Naval base located in the middle of the remote desert. At that time, I had no memory that I was part of a secretive military program, and thus the “special assignment” held little tangible meaning for me.



Probe Calibration and World-line Training (Part One)

Here is the story how the set of MAJestic probes, placed inside my skull, were calibrated. This took place after implantation, and involved calibration exercises at the Naval facility at China Lake in California. This is a two part post and discusses the facility and actions there.



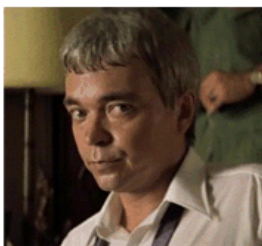
Probe Calibration and World-line Training (Part Two)

This is the second portion of the two part post In this section we talk about how I was instructed in the operation of calibration of the probes and how I was provided with some limited knowledge in how to modify the programming. It wraps up with my exit from training.



Adventures in World-Line Travel

Here are a selection of stories and experiences that I had when I was involved in world-line travel as part of my MAJestic mission parameters. As such, my experiences gave me some insight into the nature of the universe and of our human species. I hope this is an enjoyable read.



MAJestic Mission Shut-down & Retirement

All programs must end. This is how members of MAJestic that have core kit #2 probes implanted are retired. As they all need to be retired in a specially equipped facility and subject to a life time of monitoring. We cover the entire process and what is involved.



The Ultimate Method to Make Your Computer Safe and Secure

The best way to make your computer secure and private is to have very strong encryption and use an obscure operating system that very few people know about. Here we look at 37 obscure computer operating systems.



What life is like inside the ADC Prison in Arkansas

This post discusses what life is like in a hard labor prison in Southern Arkansas. We discuss hoe squads, food, the hole, commissary, dress, fashion, homosexual culture, prison gangs, murders, relationships and other aspects of life when you are sentenced to "Hard Time".



What it was like for me to leave America for China.

This is my story on the final moments of my life in the USA. I had just completed my retirement sequence for MAJestic and I was released to enter the monitoring section of my retirement. I decided to get the tattered remains of my life together and move to China and this is what it was like for me to do so.

MAJestic Related Posts – Our Universe

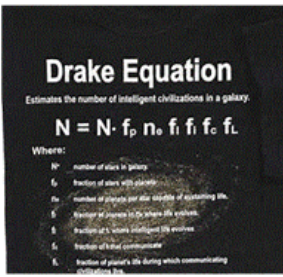
These particular posts are concerned about the universe that we are all part of. Being entangled as I was, and involved in the crazy things that I was, I was given some insight. This insight wasn't anything super special. Rather it offered me perception along with advantage. Here, I try to impart some of that knowledge through discussion.

Enjoy.



The Secrets of the Universe

When people discover what my role was in MAJestic, one of the first things that they ask me is whether or not I can "tell them the secrets of the universe". Certainly, they argue, I must have learned something... Well, I did. Here's the first installment.



The Drake Equation as Viewed by MAJestic

Many people use the Drake Equation to figure out why the average person is not exposed to extraterrestrials. Yet, MAJestic members know the real reason. Here we review the variables within the equation relative to MAJestic understanding and discuss things relatively.



Our Galaxy as Presented to MAJestic

Here is a very general overview of the little that I know about our galaxy. It is a mixture of known and accepted science blended with what I was exposed to in MAJestic. Of course, what is presented is within the limits of what I understand, no more. So it is actually a rough outline.



Sirius is not the home of the Enlightened Extraterrestrials

There is a rather large number of “spiritualists” who are convinced that enlightened beings from the Sirius solar system have come to earth to teach and instruct us humans. I actually find it rather laughable. Here, I review what Sirius actually is and why no great enlightened beings live there.



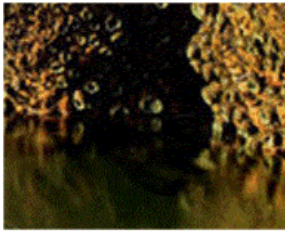
The Alpha Centauri System

Here are my thoughts on the Alpha Centauri System. It is, as always, a mixture of conventional science and what I know through my relationship with MAJestic. Keep in mind, that I am a man with limits. It is but an overview, and what is presented might hold some surprises.



The Fuselage embedded within the rocks of Victoria Falls

There is evidence that there was an accident (of some sort) that damaged a vessel (of some type). Over the years it has become buried in silt, which later turned into stone. Here we study this issue.



The Hammer inside the Rock – The “London Hammer”

Here we have evidence of a shellfish dislodging apparatus or hand-tool that was abandoned millions of years ago. Here we study this artifice. We look at the manufacturing challenges in making such an object and study the environment in which it was lost.



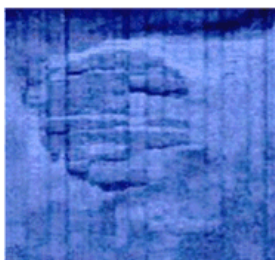
The Hollow Moon

Why is the moon hollow? This is one of those uncomfortable facts that just doesn't jive up with the conventions of accepted scientific knowledge. Yet, every study has confirmed this to be the case. Here we study this issue in detail.



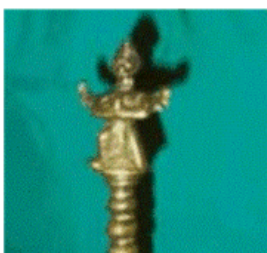
The Mystery of the Lapulapu Ridge

Deep down under the sea in the greatest depths of the Pacific ocean is a mobile underwater city. It's been *operating there for many, many years. It has been leaving* tracks and debris middens all over the place. Here, we look at this in some detail.



Mystery of the Baltic UFO

Sonar scans, and visual confirmation, indicates that a large disc shaped object skimmed the undersea world of the Baltic sea and crashed. Subsequent investigations were suppressed. Now, all that is available for study are a small pile of rocks. Let's look at this mystery shall we.



Mystery of the Bronze Bell found inside a block of coal.

A hand-bell made out of brass was discovered totally encased in a solid block of coal. What is so interesting about this bell is that it depicts a winged humanoid. The only thing is, the coal dates from a time long before birds, where only insects flew in the skies.



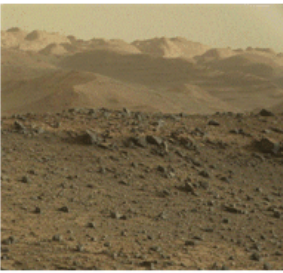
The Oil Lamp Discovered in a block of coal

Many things have been found encased within rock hard coal. One of which is a small “pot”. This is obviously the lower part of an oil lamp, common a few thousand years ago. The problem is what is it doing in millions of year old coal?



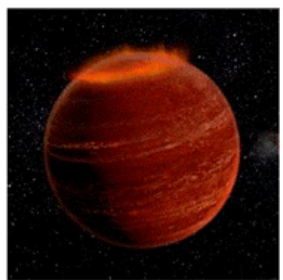
Did Extraterrestrials set up a colony in Pennsylvania?

Sounds really strange doesn't it? Well, here we talk about the possibility of a community of very “unique” red-skinned, horned giants, with firearms were actually a colony of extraterrestrials. It's a long stretch. Yet, we look at them from this prism, as unlikely as it is.



The Oxia Palus Facility.

Here we talk about a facility that I know a lot about. It is a MAJestic aligned facility on the surface of Mars in the Oxia Palus region. It is many things, and was initially a mining operation with a smelting and processing facility. Here we discuss this facility as an overview only.



Let's chat about Brown Dwarf solar systems

Up until a very few years ago, no one knew if Brown Dwarf stars existed. Now we know that they do indeed exist, and that they are everywhere. Most people are unaware of them, but they play an important role as these dwarf stars are the home of many an intelligent extraterrestrial.



NASA Manned Space Exploration - What happened?

When President killed the Apollo space program, and Jimmy Carter neutered NASA, everyone sat back, fat and content that money was not being wasted and that instead American infrastructure was being taken cared for. Here is the real reason why Apollo and manned space died.



The Disclosure of the CARET Program at PACL

A full unapproved disclosure of a MAJestic related reverse engineering program was released to the public. It concerned the CARET program at PACL. It was quickly attacked and debunked. A music video was even generated as part of it. Here is the full documentation package.



Yes, We Do Live in a Multidimensional Universe

Here we discuss how world-line travel is possible. We look at the physics of the MWI and the mathematics involved. We also discuss an overview of Heaven, our universe and how our experiences within our reality are important. In our reality, everything is possible. It really is.



The True Nature of the Universe

This is a discussion on the true nature of the universe and how individual realities fit within its' scope. I consider this an important writing and it acts as a "bridge" between the various "schools of thought" on the nature of our universe. What is presented is for your consideration.



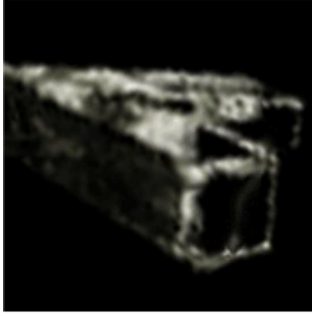
Why our Understanding of Reality is False

Here we discuss four paradoxes of the second law of thermodynamics and use this as a springboard to illustrate that it is impossible to understand our reality within the MWI using Newtonian limitations placed on us through observation.



Evolution of the first sentient life on Earth.

Humans are not the first intelligent life on earth. There were many others. Here we discuss one of the first species of intelligent life; the Cephalopods. They have existed for hundreds of millions of years, and now exist as octopi that inhabit the oceans around us. Let's talk about them.



Transport of an Extraterrestrial Modular Structure

In 2012 through 2014, a huge armada of skyscraper-sized modular components was tracked inbound to our solar system from deep space. They decelerated and landed on the moon. This is the story of how MAJestic scrambled to find out what was going on at this time.



The Frightening Possibility of Genetic Social Stratification

The primary mission requirements that I was involved in lay in assisting our benefactors in human sentience determination. The human race is moving towards a day of evolution and key to that point in time is the chosen sentience we select. It has frightening consequences.



The most common extraterrestrial species that interacts with Americans.

Here we discuss the grey extraterrestrial alien species. Contrary to the public narrative, there are numerous extraterrestrial species that regularly visit the Earth. In fact, they have all been doing so for many, many years.



The Mystery of the Dellschau Flying Contraptions

Here we discuss the mystery of a secret organization wholly devoted to enabling humans to fly. This organization was active years before the Wright brothers ever contemplated manned air flight. The members eventually died off, and all that remains are the records of their adventures.

MAJestic Related Posts – World--

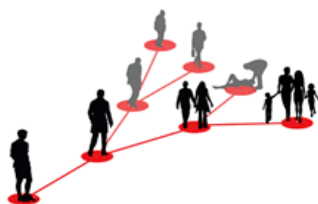
Line Travel

These posts are related to “reality slides”. Other more common terms are “world-line travel”, or the MWI. What people fail to grasp is that when a person has the ability to slide into a different reality (pass into a different world-line), they are able to “touch” Heaven to some extent. Here are posts that cover this topic.



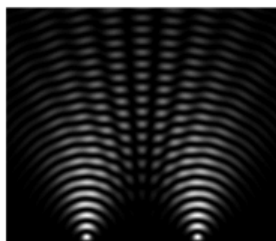
Some True Stories of Cat Heaven

Being in MAJestic taught me many things. One of which was an intimate understanding of Heaven and other “spiritual” things relative to quanta entanglements. Here I discuss what it is like to have a beloved animal (cat) dies and what actually happens to them and why.



Consciousness Migration for World-Line Travel

This post discusses how Heaven was formed, and what reality actually is. It discusses how world-lines function and just what MWI (Many Worlds Interpretation) is. This little post is the foundation of all aspects of my particular involvement with MAJestic. As such, it is important reading material.



What I miss from my original world-line

This is a little micro-post of some of the things that I miss from my time “before” I got involved with MAJestic and all that MWI “stuff”. It really makes no sense to anyone in this reality, but to me, it’s pretty important stuff. It’s simply a compilation of some of the quirks of this reality that are different to me.



Graphic on how world-line travel is possible

Many people are intrigued about world-line travel. They argue that the MWI is too difficult to understand, but thanks to Hollywood, the imagined adventures in alternative world-lines are quite appealing. Here we set forth how the MWI works and how it can be leveraged for world-line travel.



An Observed World-Line Switch - The Aluminum Foil Lady

Here is a report of a person entering this “world-line”. She appears on a busy road and is filmed by an automobile dash cam in the process. She is wearing a protective thermal “space blanket” material coat, and is apparently dressed like a nun. We discuss her and the utility of roads in this context.



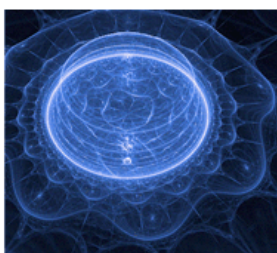
World-Line Travel Using Vehicles - Some Examples

There is ample evidence that people are entering and leaving our reality using various methods and techniques. One of which consists of vehicles with heavy devices that enable world-line cross-over events. Here we discuss these events and look at numerous examples.



A World-Line where the Beatles Never Broke Up

Here is a story about a man who ended up getting hurt and was rescued by someone from an alternative world-line. He tell his story and brings back a Beatles mix tape as proof. We discuss his adventure relative to MWI slides and look at commonality of descriptions.



World-Line Creation and Stability Considerations

Let’s talk a little bit about what a world-line is, how it is accessed, and why it sometimes needs to be accessed. This isn’t full of all kinds of stories about visiting different world-lines, but rather why certain advanced species use the MWI to control the sentience evolution of humans.



ProfessorPhate as an Example of MWI Crossover

In 1999 an individual going by the name “Professorphate” produced a narrative claiming that he was from another world-line. In his narrative he talked about this other world-line and the circumstances that brought him to our apparent reality. Presented for curiosity only.



The “Passage of Time” is actually Observed MWI World-line Slides. Here we discuss what time actually is, and the differences between a dimensional egress portal and a MWI slide. We also use examples, two to be exact, where people have entered and left our reality using a 7th dimensional transport. We discuss how this works and why.



What is the Color of Chartreuse; is it Red or Green?

Many people who have lived through the 1980's, such as myself, clearly remember the color to be a deep red like color. However, our current reality describes this color as a yellow green. This confusion is known as a Alter-vús, and this post describes what is actually going on.



Mandela Effect - A System of Soul Management

Here we look at an interesting mystery that is occasionally observed. It is known as the Mandela effect. Essentially it is a situation whereas our memories do not match up with the reality. Here, we look at it in terms of MAJestic and the management and cultivation of soul growth.



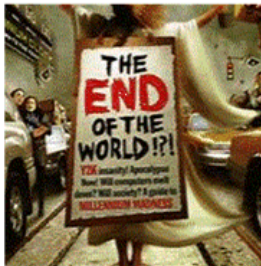
What the difference is between Soul and Consciousness

To understand how our reality exists and what Heaven is like you need to understand the basics of just what we are. Here is one such fundamental understanding. That is the difference between souls and consciousness. For while we think, reason and experience, it is our consciousness that does so for our soul.

John Titor Related Posts

Another person, collectively known by the identity of “John Titor” claimed to utilize world-line (MWI egress) travel to collect artifacts from the past. He is an interesting subject to discuss. Here we have multiple posts in this regard.

They are;



John Titor and World-Line Travel as Time-Travel (Part 1)

This is an introduction to John Titor and his claim that he utilized world-line travel to go into apparent past(s) to acquire equipment. He burst onto the internet in 1998 and left in 2001. He left a trail of mysteries in his wake. In review, knowing what we know today, his story rings true.



John Titor and World-Line Travel as Time-Travel (Part 2)

Here we look at the John Titor narrative that describes what happened in the United States that precipitated civil war, and World War II. We look at it from a point of view twenty years later, and to the surprise of many, he accurately predicted many things that we take for granted now.



John Titor and Details on his Time-Machine (Part 3)

Here we spend some time going into the disclosed details of how the Time Machine actually works. We look at the manual and come up with the conclusion that he actually was hiding something or some elements of the machine. Let's look at this issue.



John Titor and our Reactions to his Disclosure (Part 4)

Strange as it might seem, once the news of John Titor hit the internet, many people had all sorts of reactions to it. Here we review the reactions. They, in themselves, tell us a lot about ourselves, society and about the nature of the universe. Here we look at the reactions.



John Titor - Full Text of his Transcripts (Part 5)

For over a decade the actual transcripts of what John Titor said and his discussions on chat boards were obliterated. The only thing that you could find were websites that said he was a hoax. That all changed when enthusiasts collected and posted his writings. Here are the earliest transcripts.



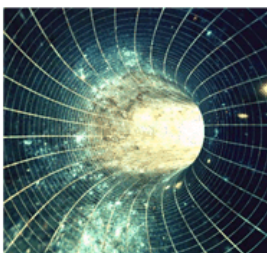
John Titor – Full Text of his Transcripts (Part 6)

There are all sorts of fragments of the John Titor discussions floating in bits and pieces throughout the Internet. This post collects some of the more obscure bits that did not make it into part 5 of the text. These tidbits are interesting but also irritating as the attacks on the narrative are relentless.



John Titor – Full Text of his Transcripts (Part 7)

This is the final discourse from John Titor to the rest of the folks on the BBS “Time Travel” board. He answers questions and responds to requests. He also clarifies things. Of course, the sniping and harping, as irritating as it is, continues unabated. It’s the final posting of this discussion.



John Titor – Full Text of his TTI Board Transcripts (Part 8)

Here is a secondary source for discussions involving John Titor. He subscribed to numerous time travel BBS forums, and this one; TTI is often overlooked. Here, we look at some of his statements on the board. His dialog on this board is very interesting and contains uncommon narratives.

Articles & Links

- You can start reading the articles by going [HERE](#).
- You can visit the Index Page [HERE](#) to explore by article subject.
- You can also ask the author some questions. You can go [HERE](#) to find out how to go about this.
- You can find out more about the author [HERE](#).
- If you have concerns or complaints, you can go [HERE](#).
- If you want to make a donation, you can go [HERE](#).